

Nexus Series

Nexus A315 Wireless 160W 15" Active Speaker

Nexus A612 Wireless 275W 12" Active Speaker

Nexus A815 Wireless 400W 15" Active Speaker

Nexus A915SB 450W Active 15" Subwoofer

Nexus A935SB 900W Active 15" Subwoofer with Powered Output



Nexus Active Speaker



Nexus Active Subwoofer

The Nexus Active Speakers utilize the ultra-fast 2.4 GHz bandwidth to communicate with your mixers or any other pro audio device. They can also be used in conjunction with Phonic wireless microphones, for a completely wireless PA solution. Nexus Series speakers have an attractive yet impact-resistant design. The asymmetrical molded enclosure is made of highly durable polypropylene and is designed for use as a stage monitor, stand-mounted speaker or for permanent installation. The Nexus speakers come in 12" or 15" sizes, or 15" Subwoofers, with 160 to 900 Watts of continuous output power.

Nexus Active Speakers represent active speaker technology taken to the next level. These speakers deliver the same great sound of other active speakers, namely, crisp highs and punchy mids and lows, wide sound dispersion and low power loss, in a completely wireless speaker. The speakers have a built-in 4th-order 24dB Linkwitz-Riley electronic crossover and two custom tailored power amplifiers - one each for high- and low-frequency transducers. These deliver maximum power to the tweeter and woofer to give them unusually powerful yet clear sound.

Nexus Active Speakers have the option of wired or wireless operation, giving you incredible flexibility when hooking them up to your PA system. They can be used with a wireless microphone with very little setup and no audio cables required. Or, a wireless mixer module can be used to wirelessly transmit the signal from the mixer to the Nexus active speakers in mono or stereo image, making this truly the world's first wireless PA speaker.

PHONIC

Nexus A315 Wireless 160 Watt 15" Active Speaker

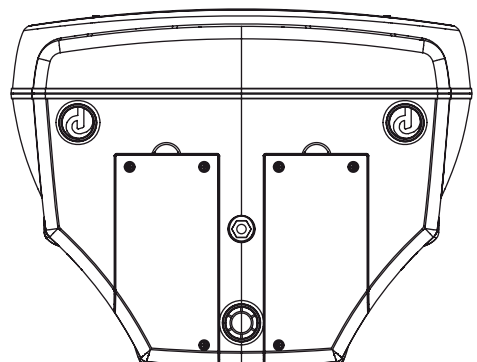
- Bi-amplified design with 160 Watts (RMS)
- Switchable Mic/Line balanced input
- Low cut filter: 75 Hz, 18 dB / octave
- Contour switch with 5 dB boost @ 80 Hz (1/3 octave), 5 dB boost @ 10.5 kHz (1/3 octave)
- Crossover point at 2.5 KHz
- Built in limiter for overload protection and limiter indicator
- Wireless UHF system (optional)
- Lightweight speaker cabinet with dynamic sound

Nexus A612 Wireless 275 Watt 12" Active Speaker

- Bi amplified design with 275 Watts (RMS)
- Switchable Mic/Line balanced input
- Low cut filter: 75 Hz, 18 dB / octave
- Contour switch with 5 dB boost @ 120 Hz (1/3 octave), 5 dB boost @ 10.5 kHz (1/3 octave)
- Crossover point at 2.5 KHz
- Built in limiter for overload protection and limiter indicator
- Wireless UHF system (optional)
- Lightweight speaker cabinet with dynamic sound

Nexus A815 Wireless 400 Watt 15" Active Speaker

- Bi-amplified design with 400 Watts (RMS)
- Switchable Mic/Line balanced input
- Low cut filter: 75 Hz (18 dB/oct)
- 4th-order 24 dB Linkwitz-Riley electronic crossover
- Contour switch with 5 dB boost @ 80 Hz (1/3 octave) and 10.5 kHz (1/3 octave)
- Crossover point at 2.5 KHz
- Built in limiter and indicator for overload protection
- Wireless UHF system (optional)
- Lightweight speaker cabinet with dynamic sound

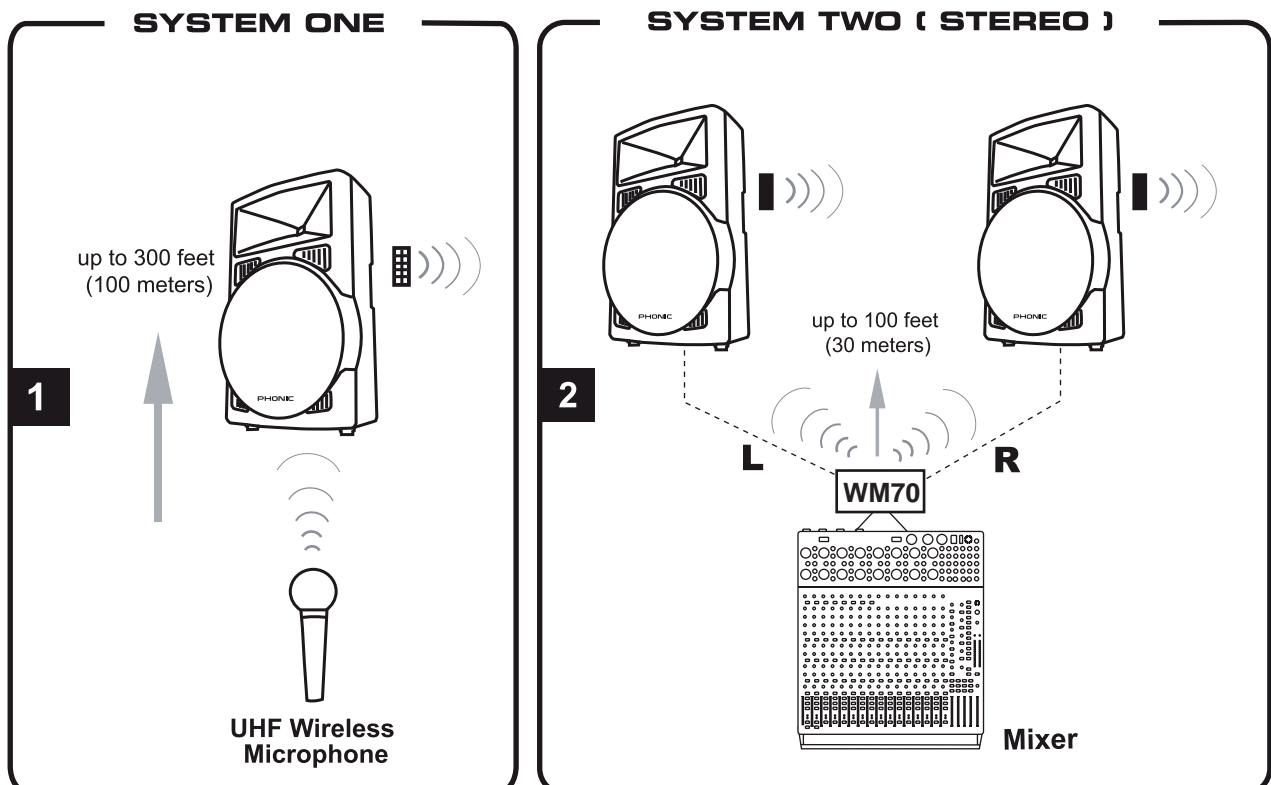


Nexus A915SB 450 Watt 15" Active Subwoofer

- Built-in 450 Watt (RMS) amplifier
- Balanced XLR input and output
- Built in protection circuitry
- Lightweight cabinet with dynamic sound
- 128 dB Max SPL (1 Watt @ 1 meter)
- 22k ohm input impedance
- 35mm pole mounting point

Nexus A935SB 900 Watt 15" Active Subwoofer with Powered Output

- Built-in 900 Watt (RMS) amplifier for subwoofer with 2 x 100 Watts (RMS) output for full range speakers
- Balanced XLR input and output
- 2 x 1/4" Phone jack outputs for powering passive speakers with 100 Watts (RMS) of power at 8 ohms
- Built in protection circuitry
- Lightweight cabinet with dynamic sound
- 126 dB Max SPL (1 Watt @ 1 meter)
- 22k ohm input impedance
- 35mm pole mounting point



- 2.4 GHz Transmitter (WM30)
- 2.4 GHz Receiver (WM400)
- ▤ 2.4 UHF Receiver (UM11/UM22)

Nexus Series

Specifications

	A612	A315	A815	A915SB	A935SB
Output RMS	225+50 W	120+40 W	320+80 W	450W	700W + 100W x 2 / 8Ω *
Bass Drive	12"	15"	15"	15"	15"
Tweeter	1"	1"	1"	-	-
Frequency Response	65Hz~20KHz	50Hz~20KHz	50Hz~20KHz	38Hz-150Hz	38Hz-150Hz
Max dB SPL	126 dB	123 dB	126 dB	128 dB	126 dB
Impedance	20kΩ balanced/ 10kΩ unbalanced	20kΩ balanced/ 10kΩ unbalanced	20kΩ balanced/ 10kΩ unbalanced	22 kΩ	22 kΩ
Crossover Frequency	2.5 kHz	2.5 kHz	2.5 kHz	-	-
Sensitivity	-50~0dB on input	-50~0dB on input	-50~0dB on input	98 dB	98 dB
Input	XLR+phone	XLR+phone	XLR+phone	XLR	XLR
Output	XLR	XLR	XLR	XLR	XLR / 1/4" TRS
Weight	20.5kg (45.2 lbs)	19.5kg (43 lbs)	21.5kg (47.4 lbs)	< 30Kg (66 lbs)	< 30Kg (66 lbs)

* Includes 2 x Powered Outputs

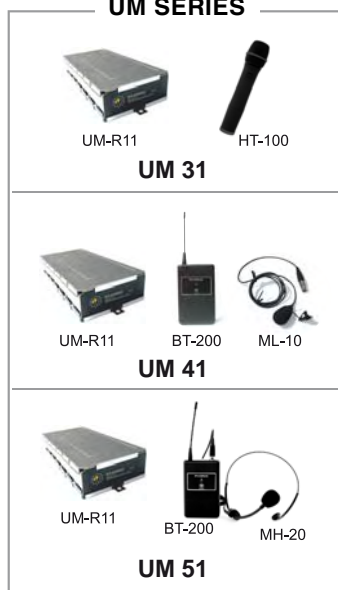
Back Panel



Optional Accessory:

- ▶ Wireless microphone systems (UM31, UM41, UM51)
 - UM31:** Wireless Handheld System
 - UM41:** Wireless Lavalier System
 - UM51:** Wireless Head-set System
- ▶ Wireless transmitters & receivers (WM-SYS1, WM-SYS2)

UM SERIES



MAKING Nexus SPEAKERS WIRELESS

