

### V8.2 Hybrid

8 Audio, 2 Video Input Mixing Console



### V16.2 Hybrid

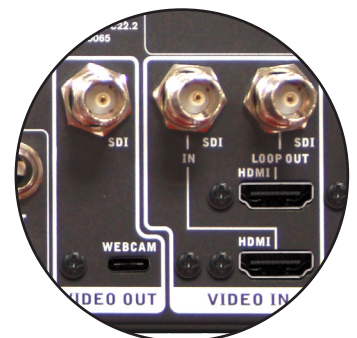
16 Audio, 2 Video Input Mixing Console



## Key Features

- ▶ Video and audio mixing meet in perfect synergy
- ▶ 2 video inputs: HDMI and 3G-SDI connectors
- ▶ Direct "loop thru" video outputs on each input for monitoring
- ▶ 3G-SDI main program output for viewing your final video mix
- ▶ USB-C virtual webcam connector for livestreaming video and audio
- ▶ Selectable video transitions (cut, dip and mix) with adjustable transition time
- ▶ Neutrik combo inputs accepting both XLR and 1/4" input connectors
- ▶ Integrated Bluetooth for wireless streaming of audio from smart devices
- ▶ USB stereo audio interface for streaming audio to computer at quality superior to CDs
- ▶ Supports Full High Definition 1080p video up to 60fps
- ▶ SDI to HDMI adapter accessory available (sold separately)

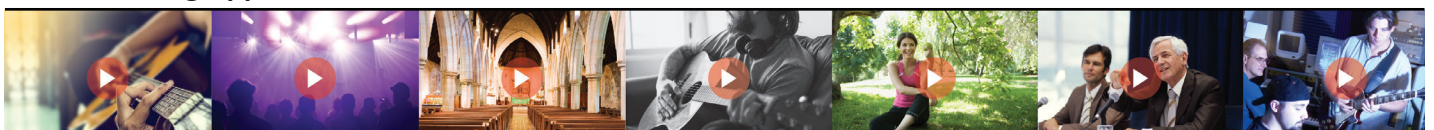
## VIDEO IN/OUT



## Description

Step up your live streaming game with a Phonic V Hybrid audiovisual mixer. Offering a full-scale analog mixing console, the V Hybrid series provides a simple yet effective means to incorporate video elements into your performance. Each unit features both audio and video inputs and outputs. On the video side, the V Hybrid includes HDMI and 3G-SDI inputs as well as identical loop-out connectors for connecting preview monitors. An SDI video output allows for monitoring of your final video program, while a USB-C webcam connector allows users to stream their video content through your selected live streaming platform. For your audio mixing, Phonic offers professional Combo inputs from Neutrik (the gold standard for microphone input) and line-level stereo channels allowing all your microphones, instruments and other devices to be injected into your audio and video mixes with ease. Whether creating a fantastic live stream or doing live performances with simple video elements, the V Hybrid mixers offer a simple solution to combine these two worlds.

## Live Streaming Applications



# V Hybrid

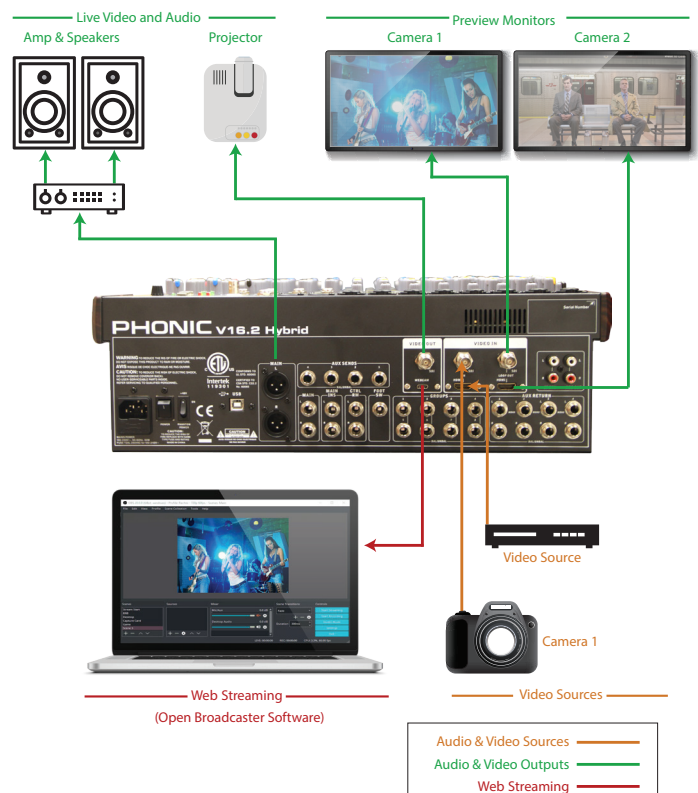
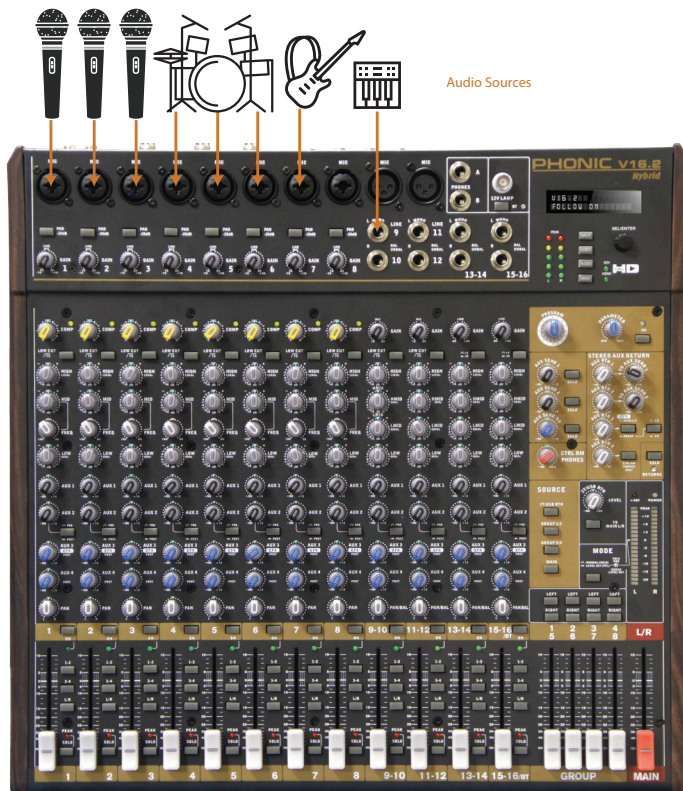
## Audiovisual Mixer Series

### Setup Examples

#### Live Streaming



#### Live Performances



# V Hybrid

## Audiovisual Mixer Series

### Specifications

	V8.2 Hybrid	V16.2 Hybrid
<b>Inputs</b>		
<b>Total Channels</b>	8	16
Balanced Mono Mic / Line Channel	4	8
Balanced Stereo Mic/Line Channel	-	2
Balanced Stereo Line Channel	2	2
AUX Return	-	4 stereo
2T Input	Stereo RCA	Stereo RCA
Video Inputs	1 x HDMI, 1 x 3G-SDI	1 x HDMI, 1 x 3G-SDI
<b>Outputs</b>		
Main L/R Stereo	2 x XLR	2 x 1/4" TRS & 2 x XLR
AUX/EFX Send	2 x 1/4" TS (ALT 3-4)	4 x 1/4" TS
Rec Out	Stereo RCA	Stereo RCA
CTRL RM L/R	2 x 1/4" TS	2 x 1/4" TS
Phones	1 x 1/4" TRS	2 x 1/4" TRS
Video Outputs	HDMI, 3G-SDI (loop through), 1 x 3G-SDI Program	HDMI, 3G-SDI (loop through), 1 x 3G-SDI Program
<b>Channel Strips</b>		
AUX/EFX Send	2	4
Pan/Balance Control	Yes	Yes
Volume Controls	60 mm fader	60 mm fader
Inserts	-	Main
<b>Master Section</b>		
AUX Send Master	2	3
Master AUX Send Solo	-	3
Stereo AUX Returns	2	4
AUX Return Assign to Subgroup	1	1
Effects Return to Monitor	1	2
Phones Level Control	Yes	Yes
Main L/R Level Control	60 mm fader	60 mm fader
<b>USB Interface</b>		
Connector Types	Stereo In/Out + Virtual Webcam	Stereo In/Out + Virtual Webcam
Interface Bit Rate / Sampling	24-bit / 48 kHz	24-bit / 48 kHz
Bluetooth Connectivity	2.4GHz	2.4GHz
<b>Metering</b>		
Audio: 2 x 20, Video: 2 x 5	Audio: 2 x 20, Video: 2 x 5	Audio: 2 x 20, Video: 2 x 5
<b>Phantom Power Supply</b>		
+48V DC	+48V DC	+48V DC
<b>Frequency Response</b> (Mic input to any output)		
20Hz - 60KHz	+0/-1 dB	+0/-1 dB
20Hz - 100KHz	+0/-3 dB	+0/-3 dB
<b>Crosstalk</b> (1KHz @ 0dBu, 20Hz to 20KHz bandwidth, channel in to main L/R outputs)		
Channel fader down, other channels at unity	<-90 dB	<-90 dB
<b>Noise</b> (20Hz to 20KHz; measured at main output, Channels 1-4 unit gain; EQ flat; all channels on main mix; channels 1/3 as far left as possible, channels 2/4 as far right as possible. Reference=+6dBu)		
Master @ unity, channel fader down	-86.5 dBu	-86.5 dBu
Master @ unity, channel fader @ unity	-84 dBu	-84 dBu
S/N ratio, ref to +4	>90 dB	>90 dB
<b>Microphone Preamp E.I.N.</b> (150 ohms terminated, max gain)		
<-129.5 dBm	<-129.5 dBm	<-129.5 dBm
<b>THD</b> (Any output, 1KHz @ +14dBu, 20Hz to 20KHz, channel inputs)		
<0.005%	<0.005%	<0.005%
<b>CMRR</b> (1 KHz @ -60dBu, Gain at max.)		
80 dB	80 dB	80 dB
<b>Maximum Level</b>		
Mic Preamp Input	+10 dBu	+10 dBu
All Other Input	+21 dBu	+21 dBu
Balanced Output	+28 dBu	+28 dBu
<b>Impedance</b>		
Mic Preamp Input	2 K ohms	2 K ohms
All Other Input (except insert)	10 K ohms	10 K ohms
RCA 2T Output	1.1 K ohms	1.1 K ohms
<b>Equalization</b>		
3-band, +/-15 dB	3-band, +/-15dB (4-band on Stereo Ch)	3-band, +/-15dB (4-band on Stereo Ch)
Low EQ	80 Hz	80Hz
Mid EQ	800 Hz	100-8k Hz, sweepable (Mono Channels)
Hi-Mid EQ (Stereo Channel)	-	800 Hz
Lo-Mid EQ (Stereo Channel)	-	3 kHz
Hi EQ	12 KHz	12 kHz
Low Cut Filter	-	75 Hz (-18 dB/oct)
32/40-bit Digital Effect Processor	16 EFX	16 EFX
Power Requirement (depends on region)	100VAC, 120VAC, 220 to 240VAC, 50/60Hz	100 to 240 VAC, 50/60 Hz (Internal)
Dimensions (W x H x D)	242 x 55 x 228 mm (9.5" x 2.2" x 9")	418 x 149 x 420 mm (16.5" x 5.9" x 16.5")
Weight	1.7kg (3.75 lbs)	5.9 kg (13 lbs)

Information in this document is subject to change without notice.

V Hybrid Data Sheet 2/1/2019

**PHONIC**  
WWW.PHONIC.COM