

# PHONIC

HOW FAR WILL YOUR MUSIC GO ?

Mixers Amplifiers Speakers Audio Testing Wireless Effects Mobile PAs Digital Interfaces Signal Processors



## LIVE SOUND

- **AM MIXERS** p.11~p.12  
Compact analog desktop mixers
- **SONIC STATION** p.8  
Large format analog mixing consoles
- **POWERPOD** p.15~p.18  
Durable, high wattage powered mixers
- **XP AMPLIFIERS** p.20  
Premium, low-impedance power amplifier
- **MAX AMPLIFIERS** p.21  
Robust yet versatile power amplifiers
- **CENTER SPEAKERS** p.23  
Specially constructed high performance passive speakers
- **IMPRESSION SPEAKERS** p.24  
Lightweight and flexible sound reinforcement speakers
- **SEM SPEAKERS** p.24  
Entry-level stage/floor monitor speakers
- **NEXUS SPEAKERS** p.22  
Molded active speakers and subwoofers with wireless capabilities

## MOBILE PA

- **ROAD GEAR** p.27  
Completely integrated mobile PA systems
- **SOUND AMBASSADOR** p.26  
Extensible all-in-one conference solutions



## RECORDING

- **FIREFLY** p.2~p.3  
Multi-channel digital recording interfaces
- **STUDIO WIZARD** p.4  
Studio Monitor Controller
- **IMPACT** p.10  
Stylish and durable compact analog mixing consoles
- **HELIX BOARD** p.5~p.7  
Portable USB- and FireWire-enabled mixers
- **AM MIXERS** p.11~p.12  
Compact analog mixers
- **P STUDIO MONITORS** p.25  
High-resolution, 2-way reference studio monitors
- **SIGNAL PROCESSORS** p.30~p.31

## INSTALLATION

- **ZX ZONE MIXERS** p.9  
Multi-zone mixers with paging capabilities
- **ICON AMPLIFIERS** p.19  
Rugged, rack-mountable contractor amplifiers
- **SE SPEAKERS** p.25  
Professional lightweight passive and active speakers
- **VERSATAP** p.25  
Compact, weather-resistant installation speakers
- **SIGNAL PROCESSORS** p.30~p.31



You wanted high-quality professional audio equipment that's also accessible, and we listened. Our sound engineers and musicians work together to continually push the envelope of acoustic innovation to bring you reliable, great sounding equipment that remains affordable - wireless gear, new media interfaces, mixers, amplifiers, signal processors, speakers and audio test equipment.

For over 30 years, our goal has been to satisfy the needs of today's music makers. We bring you quieter, more versatile mixers, higher fidelity speakers with more reach, and amplifiers that pack more clean power. Today, we continue to talk to musicians and sound engineers to develop creative solutions that make you sound better.

Our global sales forces is strategically located with offices in almost every country. Wherever you are, Phonic is sure to be there. We follow up our global sales effort with equally enthusiastic customer service. Check us out at [www.phonic.com](http://www.phonic.com) or road test our gear at your nearest dealer.

### Phonic China Corporation



1506A, No.620 ZhangYang Road Shanghai China  
86-021-51699633 (P)  
86-021-61604116 (F)

### Phonic Shenzhen I



Nan Ling Bu Ji Long Gang  
Shen Zhen China

### Phonic Shenzhen II



Tu Yang Kui Yong Long  
Gang Shen Zhen China

### Phonic Corporation



9F, 59 Tung Hsing Rd  
Taipei Taiwan 110.  
886-2-8768-2628 (P)  
886-2-8738-3655 (F)

**Phonic America Corporation**



6103 Johns Rd #7  
Tampa, FL 33634.  
813-890-8872 (P)  
813-890-6861 (F)

★ **TAMPA**

DIGITAL INTERFACES	<b>02</b>
NON-POWERED MIXERS	<b>05</b>
AUDIO TESTING	<b>13</b>
POWERED MIXERS	<b>15</b>
AMPLIFIERS	<b>19</b>
SPEAKERS	<b>22</b>
MOBILE PA	<b>26</b>
WIRELESS GEAR	<b>28</b>
SIGNAL PROCESSORS	<b>30</b>
APPENDIX	<b>32</b>
INDEX	<b>36</b>



483 x 88 x 286 mm (19" x 3.2" x 11.22")  
2 kg (11 lbs)

The new Phonic Firefly 808 and Firefly 808 Universal Rack-mountable preamplified units with digital interface are easy-to use, high-quality recording interfaces for songwriters to record guitars, keyboards, vocals and more to the computer through FireWire and USB 2.0 (USB 2.0 on Universal model only). Featured are 8 analog (XLR and 1/4") inputs and 8 analog (1/4") outputs, as well as S/PDIF, AES/EBU, MIDI and ADAT inputs and outputs – all of which are streamed to and from the computer in real time through the FireWire or USB 2.0 connection in superb 24-bit / 192kHz audio. Compatible with the most popular of Digital Audio Workstation software, these powerful units provide recording musicians and engineers alike the kind of sophisticated - yet easy-to-use - recording device they so desperately desire.

- 24-bit resolution, up to 192 kHz sampling rate
- Headphone output and main output with volume control for monitoring purposes
- S/PDIF I/O, AES/EBU I/O, MIDI I/O and word clock I/O
- Stand-alone mixer functionality for field and studio use without computer
- Compatible with Mac OSX and Windows XP / Vista
- Steinberg Cubase LE 4 DAW software included

**CUBASE LE4** Included   Compatible

## FIREFLY 808

Studio Recording Preamp with 192 kHz FireWire Interface

- FireWire (IEEE 1394) audio interface
- 18 simultaneous inputs and outputs FireWire audio interface
- 8 microphone preamps with trim control and individual phantom power switches
- 8 analog line Inputs including 2 Instrument Inputs
- 8 channels of optical ADAT I/O (4 ch. via 96k dual SMUX)
- Channel meters on channel 1 to 8 for input or output
- Synchronization, sampling rate, digital I/O and MIDI in/out indicators
- Dual FireWire ports for daisy chaining and direct connection to Mac or PC
- Instrument input, pad switch, balanced TRS send jacks on Inputs 1 and 2

## FIREFLY 808 UNIVERSAL

Studio Recording Preamp with 192 kHz USB 2.0/FireWire Interface

- FireWire (IEEE 1394) and USB 2.0 audio interface
- 18 simultaneous inputs and outputs FireWire/USB 2.0 audio interface
- 8 microphone preamps with trim control and individual phantom power switches
- 8 analog line Inputs including 2 Instrument Inputs
- 8 channels of optical ADAT I/O (4 ch. via 96k dual SMUX)
- Channel meters on channel 1 to 8 for input or output
- Synchronization, sampling rate, digital I/O and MIDI in/out indicators
- Dual FireWire ports for daisy chaining and direct connection to Mac or PC
- Instrument input, pad switch, balanced TRS send jacks on Inputs 1 and 2



155 x 196 x 51 mm (6.1" x 7.7" x 2")  
0.9kg (1.98 lbs)

## FIREFLY 302 **Plus**

Portable 5 x 6 FireWire Audio Interface

- 5 x 6 24-bit/96kHz I/O
- 2 x 2 analog operation (RCA)
- Digital S/PDIF (coaxial) I/O (PCM)
- Front-panel microphone in (XLR) with: 48V phantom power
- Headphone output with dedicated level control
- Near-zero latency ASIO software monitoring
- 1 x 1 16-channels MIDI I/O
- Power indicator LED
- Powered via FireWire bus or included DC power supply
- Dual FireWire (6 and 4 pin ports) with bus-power
- Sig and Clip LED's for input and output
- Mac and Windows XP / Vista compatible



155 x 196 x 51 mm (6.1" x 7.7" x 2")  
0.9kg (1.98 lbs)

## FIREFLY 302 USB

Portable 5 x 6 USB2.0 Audio Interface

- 5 x 6 24-bit/192kHz USB Stream I/O
- 2 x 2 analog operation (RCA)
- Front-panel microphone in (XLR) with 48V phantom power
- Headphone output with dedicated level control
- Near-zero latency ASIO software monitoring
- Power indicator LED
- Powered via included DC power adaptor
- An easy-to-read LED sig and clip indicators for input and output
- Mac and Windows XP / Vista compatible

## FIREFLY 404 *New*

USB 2.0 DJ Recording Interface

- 4 x 4 24-bit/192kHz USB I/O
- 4 x 4 analog operation
- Two stereo inputs (phono RCA and 1/4" line)
- Front-panel microphone in (XLR) with +48V phantom power
- Low-latency direct monitoring
- Front-panel phones output with dedicated level control
- USB 2.0 interface for multi-track recording
- ASIO driver included
- Mac and Windows XP / Vista compatible
- Powered through the included DC power adaptor

	Firefly 302 Plus	Firefly 302 USB	Firefly 808	Firefly 808 Universal	Firefly 404	
Inputs	2	2	8	8	2	1/4"
	2	2	-	-	4	RCA
	✓	✓	8	8	2	Mic
	✓	✓	✓	✓	✓	S/PDIF
	✓	✓	✓	✓	-	MIDI
	✓	✓	✓	✓	✓	Phones
	-	-	✓	✓	-	ADAT
	-	-	✓	✓	-	AES/EBU
Outputs	2	2	5	5	2	1/4"
	2	2	2	2	2	RCA
	✓	✓	✓	✓	✓	S/PDIF
	✓	✓	✓	✓	-	MIDI
FireWire	5	-	8	8	-	Inputs
	2	-	8	8	-	Outputs
USB 2.0	-	5	-	8	4	Inputs
	-	2	-	8	2	Outputs
Sampling Rates (kHz)	44.1, 48, 88.2, 96		44.1, 48, 88.2, 96, 176.4, 192			
Phantom Power	universal	universal	individual	individual	individual	
Level Meter	-	-	16 x 10-pt	16 x 10-pt	6 x 12-pt	
Indicators	mic, clip	mic, clip	level, sync, clock, digital in/out		level, clock, midi	





## STUDIO WIZARD

Studio Monitor Controller

Take the helm of your digital studio with the Studio Wizard, the control center for all of your inputs and outputs. The Studio Wizard integrates a rack-mountable base unit for audio input and output signals, and a desktop controller for remote operation of the device. It accepts up to four balanced stereo line-level inputs and two digital inputs with 24-bit/192k DA conversion. Three sets of monitor outputs provide the option to compare between different sets of Phonic studio monitors, and a volume knob with an accurate digital readout gives you precise level control. A built-in talkback microphone is assignable to the studio outs, record outs, monitor or an alternate output and lets you easily communicate with the talent. Or, connect your own talkback mic via the XLR input on the front panel. A headphone mixing bus lets you choose the inputs you want to monitor and control the volume with independent digital level controls. A sum button conveniently selects multiple inputs and routes them to the outputs. Other important features are a tone generator, left and right cut buttons, a stereo-to-mono button for checking phase, crossfader, a 20-segment LED output meter and an 11-segment LED phase meter.

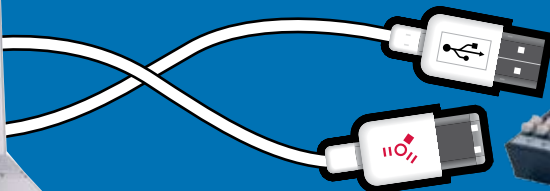
- Volume control knob with digital display for precise level adjustments
- Three separate studio monitor outputs
- Built-in talkback microphone lets you easily communicate with musicians
- Talkback assignable to studio out, record out, monitor, or alternate output
- Monitor four independent stereo analog inputs and two digital inputs
- Six stereo inputs (two digital and four analog)
- Sum button allows multiple inputs to be conveniently selected and routed to outputs
- Front panel headphone output
- Simultaneous automatic fade-in and -out for hands-free cross-fading
- Tone generator: 100 Hz, 1 kHz, 10 kHz sine waves and pink noise
- Independent left and right cut buttons and stereo-to-mono button
- Microphone jacks for connecting external talkback microphones
- 24-bit DAC for digital inputs (>115 dB dynamic range)
- Accurate dual 20-segment LED meter for monitoring
- Accurate 11-segment LED meter for phase monitoring
- All stereo outputs have independent input sources
- Supports sample rates up to 192 kHz and word lengths up to 24-bits for digital inputs





# Helix Boards

— USB 2.0 + FireWire Mixers —



## Features Overview

The following is an explanation of a few of the features you will find on each and every Helix Board. Though the Helix Boards do feature a number of common features, such as those described on this page, they all incorporate their own unique characteristics as well.

### LOW NOISE PREAMPLIFIERS

The lack of noise in our preamps can pass muster with even the toughest of critics. Phonic have had upwards of 30 years experience in manufacturing preamps, and the results are nothing short of spectacular.



### RACK EARS

Sounds pretty basic, right? Rack-ears are a must-have for any mixer. Can you even imagine the headache if we didn't provide them along with the mixer? Lucky for you, we do.

### FIREWIRE INTERFACE

This is really why we're all here, isn't it? The FireWire interface on all Helix Board units allows for a 96 kHz / 24-bit audio signal to be sent to the computer for recording, mixing, editing, and tweaking. A signal containing all of the Helix Board's input channels, as well as an additional stereo channel, will be sent at lightning quick speeds to the computer, and right into your Digital Audio Workstation software.

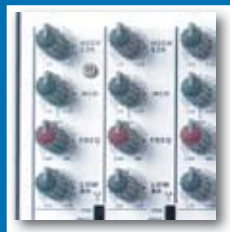


### FIREWIRE RETURN

Users are given a stereo return signal through the FireWire interface, perfect for monitoring the recorded audio. Send the FireWire return signal to the Main, AUX or Control Room mixes with the touch of a button.

### 3-BAND EQUALIZER

Don't underestimate the appeal of a good EQ. The Helix Boards provide a 3-band EQ on all channels, with high and low frequency points set at 12 kHz and 80 Hz respectively. The Helix Board 12 FireWire MKII offers a mid control set at 2.5 kHz, whereas all other models offer a swept mid adjustable between 100 Hz and 8 kHz on mono channels. A total of 12 dB of boost or cut is available through these controls. Add a little bass to your kick drum or more intensity to your guitar.



### DIGITAL EFFECTS

A hundred digital effects standard sounds good on paper, but how do they stand up in real-life, studio and live situations? That's just the thing; all of our digital effects were designed by real musicians, to be used in real situations where digital effects can enhance your performance. When it all comes down to it, that's what makes a digital effect processor more than just another useless feature.



### PRE/POST SWITCH

We know a lot of engineers like to use the Helix Board for live performances, and there are also those who want to use the board in the studio. That being the case, the pre/post switch is a feature that really separates the big players from the wannabes. Conveniently placed on every single input channel, users can switch the signal sent to their computer between that of a pre-fader signal and that of a post-fader signal. For people recording live performances, a pre-fader signal will allow you to adjust EQ and level settings for the live audio without affecting the recorded signal. If you're using the Helix Board in the studio, setting this switch to 'post' will give you total control over EQ and level settings for signals sent through the FireWire interface.



### DRIVERS & SOFTWARE

PC users will naturally need to use drivers for use with the Helix Boards FireWire and Universal. A driver CD will be packaged along with the unit. Updated drivers will be made available through the Phonic website periodically. New drivers often provide fixes on minor bugs or enable the unit to be used with newly developed software. The control panel software (part of the driver) allows users to adjust sampling rates, buffer lengths, choose synchronization settings, rename input and output channels, and a good number of other features.

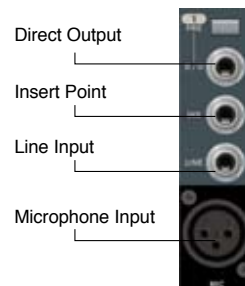
Mac users do not need to install drivers and can just plug the Helix Board in to get a multi-track signal to their computer. The Helix Board's sampling rate and other properties are adjusted through the MIDI audio setup page on the Mac. The Helix Board is compatible with Garage Band and the latest versions of Logic Pro and Logic Express.

### STEINBERG CUBASE LE 4

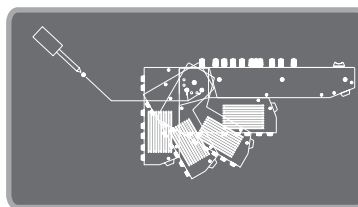
Phonic offers a 'Light Edition' of Steinberg's popular Cubase digital audio workstation software packaged along with all of its Helix Board mixers. Along with Cubase LE, Helix Board users can make high quality multi-track recordings of their audio, edit their recordings as needed – adding effects, equalization and other necessities – and export the final mixdown of their tracks.

# HELIX BOARD SERIES

Get a quality front-end for your computer. Helix Board mixers are Phonic's newest, digitally-enabled mixers that sound great and work hard both in and out of the studio. Connect a Helix Board mixer to your computer's USB 2.0 or FireWire port to get live, CD-quality sound. Low-latency playback lets you record directly to your computer and monitor in real-time. Helix Board mixers assure perfect audio quality when multi-track recording by allowing you to monitor previously recorded audio files through your headphones while recording another track. Combine the digital audio capabilities of these mixers with audio workstation software, and there's no limit to what you can do.



Input Channels



445 x 212 x 432 mm (17.5" x 8.3" 17")  
9.8 kg (21.6 lbs)

Rack-mounting  
kit included



## HELIX BOARD 18 UNIVERSAL

18-Input Mixer with USB 2.0/FireWire Interface

- Pre/post setting for swapping USB 2.0/FireWire input channels sent to computer from pre-low cut, -EQ to post-EQ, post-fader
- 18-input small-format analog mixer with extremely low noise circuitry
- 96kHz USB 2.0/FireWire interface for streaming 16 independent channels of audio to computer with zero latency
- 2 channels of monitoring from computer via USB 2.0 / FireWire interface, can be assigned to control room monitors, Main mix and AUX 1
- Channel 15/16 routed to computer can be selected from main mix, group 1/2 and AUX 2/3
- DFX, our 32/40-bit high definition algorithm digital multi-effect processor with 100 programs plus tap delay, foot switch jacks and volume controls for sending processed signal to aux send 1 & 2
- Six Mic/Line channels with inserts
- 8 extremely low noise mic preamps
- Four stereo Line channels
- 3-band EQ with swept mid-range
- 75 Hz low-cut filter on mono channels
- Three AUX sends, one with Pre/Post switch
- Two stereo AUX returns, one with effect to monitor level control
- +48V phantom power on Mic channels
- Solo feature on each input and output
- Two true subgroups with Main L and R routing switches
- Built-in switching power supply with universal connector, 100-240 VAC, 50/60 Hz
- Rack-mounting kit included
- S/PDIF digital audio output
- Compatible with Mac OSX and Windows XP / Vista
- Steinberg Cubase LE 4 included

## HELIX BOARD 24 UNIVERSAL

24-Input 4-Subgroup Mixer with USB 2.0/FireWire Interface

- 96kHz USB 2.0 / FireWire interface for streaming 18 independent channels of audio to computer with zero latency
- Pre/post setting for swapping input channels sent to the computer from pre-low cut, -EQ to post-EQ, post-fader
- 2 channels of monitoring from computer via USB 2.0 / FireWire interface, can be assigned to control room monitors, main mix and AUX 1
- DFX, our 32/40-bit high definition algorithm digital multi-effect processor with 100 programs plus tap delay and foot switch jacks
- Channel 17/18 routed to computer can be selected from Main mix, Group 1/2 and AUX 3/4
- 16 Mic/Line channels with inserts
- 3-band EQ with swept mid-range
- 75 Hz low-cut filter on each channel
- AUX 1 & 2 with Pre/Post switch
- Six AUX send mixing bus
- Four stereo AUX returns, three with effect to monitor
- +48V phantom power on Mic channels
- Four true Subgroups with Main L and R routing switches
- Direct outputs for multi-track recording
- Control Room and Phones outputs with multi-input source matrix
- Mono out with variable low pass filter from 60 Hz to 160 Hz for subwoofer
- Dual-position I/O pod
- Built-in switching power supply with universal connector, 100-240 VAC, 50/60 Hz
- Rack-mounting kit included
- S/PDIF digital audio output
- Compatible with Mac OSX and Windows XP / Vista
- Steinberg Cubase LE 4 included

**CUBASE LE4** Included   Compatible



**CUBASE LE4** Included   Compatible



445 x 212 x 432 mm (17.5" x 8.3" 17")  
9.8 kg (21.6 lbs)

## HELIX BOARD 24 FIREWIRE MKII

24-Input 4-Subgroup Mixer with DFX & FireWire Interface

- 24-input analog mixer with extremely low noise circuitry
- 96kHz FireWire interface for streaming 18 independent channels of audio to computer with near-zero latency
- Pre/post internal setting for swapping streaming input channels to computer from pre low cut, EQ to post EQ, post fader
- 2 channels of monitoring from computer via FireWire interface, can be assigned to control room monitors, main mix and aux1
- DFX, our 40-bit high definition algorithm digital multi-effect processor with 100 programs plus tap delay and foot switch jacks
- 16 Mic/Line channels with inserts
- 3-band EQ with swept mid-range
- 75 Hz low-cut filter on each channel
- AUX 1 & 2 with Pre/Post switch
- Six AUX send mixing bus
- Four stereo AUX returns, three with effect to monitor
- +48V phantom power on Mic channels
- Four true subgroups with main L and R routing switches
- Direct outputs for multi-track recording
- Control Room and Phones outputs with multi-input source matrix
- Mono out with variable low pass filter from 60 Hz to 160 Hz for subwoofer
- Dual-position I/O pod
- Built-in switching power supply with universal connector, 100-240 VAC, 50/60 Hz
- S/PDIF digital audio output

## HELIX BOARD 12 FIREWIRE MKII

12-Input Mixer with DFX & FireWire Interface

- Pre/post switch for streaming input channels to computer from pre low cut, EQ or from post EQ, post channel fader.
- 12-input small-format analog mixer with extremely low noise circuitry
- DFX, our 40-bit digital multi-effect processor with 100 programs plus tap delay and foot switch jacks
- 96 kHz FireWire interface for streaming 10 independent channels of audio to computer with near-zero latency
- Two channels of monitoring from computer via FireWire interface
- Four mono Mic/Line channels
- Two stereo channels, two stereo AUX Returns, two AUX sends
- 3-band EQ on each channel
- 75 Hz low-cut filter on mono channel
- Inserts on channel 1 & 2
- +48V phantom power on Mic channels
- Stereo AUX Send 1 cue for monitoring individual channel
- Master AUX section with EFX to Monitor
- Extra ALT 3-4 stereo bus
- Control room/Phones source matrix
- Balanced master output with 60 mm fader control
- High-volume headphone output

## HELIX BOARD 18 FIREWIRE MKII

18-Input 2-Subgroup Mixer with DFX & FireWire Interface

- 18-input small-format analog mixer with extremely low noise circuitry
- 96kHz FireWire interface for streaming 16 independent channels of audio to computer with near-zero latency
- 2 channels of monitoring from computer via FireWire interface, assignable to control room monitors, main mix and AUX 1
- Pre/post switch for swapping streaming input channels to computer from pre low cut, EQ to post EQ, post fader
- Channel 15/16 routed to Computer can be selected from main mix, group 1/2 and aux 2/3
- DFX, our 40-bit high definition algorithm digital multi-effect processor with 100 programs plus tap delay, test tones and foot switch jacks
- Six Mic/Line channels with inserts
- 8 extremely low noise mic preamps
- Four stereo Line channels
- 3-band EQ with swept mid-range
- 75 Hz low-cut filter on mono channels
- Three AUX sends, one with Pre/Post switch
- Two stereo AUX returns with effect to monitor level control
- +48V phantom power on Mic channels
- Solo feature on each input and output
- Two true subgroups with main L and R routing switches
- Built-in switching power supply with universal connector, 100-240 VAC, 50/60 Hz
- S/PDIF digital audio output

	HELIX BOARD 12 FIREWIRE MKII	HELIX BOARD 18 FIREWIRE MKII	HELIX BOARD 24 FIREWIRE MKII	HELIX BOARD 18 UNIVERSAL	HELIX BOARD 24 UNIVERSAL	
Inputs	12	18	24	18	24	Total*
	4	8	16	8	16	Mic
	4	8	16	8	16	Line
	4	4	4	4	4	Stereo*
	✓	✓	✓	✓	✓	Stereo RCA
Outputs	8	10	17	10	17	1/4" TRS
	-	2	3	2	3	XLR
	✓	✓	✓	✓	✓	Stereo RCA
	-	✓	✓	✓	✓	S/PDIF
FireWire	10	16	18	16	18	Input Channels
	2	2	2	2	2	Output Channels
USB	-	-	-	16	16	Input Channels
	-	-	-	2	2	Output Channels
Sampling Rate	24-bit / 96 kHz	24-bit / 96 kHz	24-bit / 96 kHz	24-bit / 96 kHz	24-bit / 96 kHz	
Channel EQ	3-band	3-band with swept mid				
Master EQ	-	Stereo 10-band	-	Stereo 10-band	-	
Level Meter	10-pt	13-pt	12-pt	13-pt	12-pt	
DFX	100+ effects, tap delay and test tones					

\*AUX inputs included

Rock-mounting  
kit included

# SONIC STATION SERIES

Sonic Station mixers are bursting with inputs! Every channel has a Mic preamp and balanced line input. The 3-band EQ with swept-mid (4-band EQ on stereo channels), insert points for connection to external processors, 6 AUX send mixing bus (2 AUX sends with pre/post buttons), and 8-28 direct outputs for multi-track recording allow users incredible flexibility with mix control and signal routing. But that's not all. The built-in 32/40-bit digital effect processor has 16 awesome programs, main parameter control, foot switch control and tap delay. And if you get any "sub" Sonic noise in your Mics just hit the low cut filter to get rid of breath pops, stage rumble and wind noise. Top it off with a subwoofer output, four true subgroups and phantom power, and you've got a perfect mixer for live events or studio mixing.

## SONIC STATION 16

24-Input 4-Bus Mixing Console with Dual-Position I/O Pod and DFX

- DFX, our 32/40-bit digital multi-effect processor with 16 programs plus one main parameter control, tap control and foot switch
- 16 Mic/Line channels with inserts
- 3-band EQ with swept mid-range
- 75 Hz low-cut filter on each channel
- Four true subgroups with main L and R routing switches
- Direct outputs for multi-track recording
- Control Room and Phones outputs with multi-input source matrix
- Mono out with variable low pass filter from 60 Hz to 160 Hz for subwoofer
- Dual-position I/O pod
- Rec out with trim control for record level matching
- Built-in switching power supply with universal connector, 100-240 VAC, 50/60 Hz



Rack-mounting  
kit included



440 x 210 x 475 mm (17.3" x 8.26" x 18.7")  
9.5 kg (20.9 lbs)



859 x 102.79 x 547.42 mm (33.8" x 4.05" x 21.6")  
15.5 kg (34.1 lbs)

## SONIC STATION 22

30-Input 4-Bus Mixing Console with DFX

- 22 channel 4-bus mixing console, 20 mic preamps
- Dual effect engines with 16 EFX plus one main parameter control, Effect 2 with tap delay and foot switch jacks
- Direct out with pre-EQ switch for multi-track recording
- Rec out with independent trim control
- Talkback mic built-in
- 4 stereo AUX return, each with to aux 1-4 (effect to monitor)
- Group 1-4 and AUX 1-4, Main fader and control room volume control can be swapped for monitor console use
- Variable LPF on mono output for subwoofer
- Seven 12-segment level meters for main, group or AUX
- 3-band with swept mid-range ch EQ on mono channel
- 6 AUX mixing bus, two pairs with pre/post switch
- On, Peak/Solo and Signal indicators on each input channel
- Pad/Line in switch on mono channels
- Stereo channel with XLR mic in, 1/4" and RCA line inputs
- 12V gooseneck lamp socket for working on dark place
- Main stereo and mono out with XLR jacks and inserts



1155.5 x 102.79 x 547.42 mm (45.5" x 4.05" x 21.6")  
18 kg (39.7 lbs)

## SONIC STATION 32

40-Input 4-Bus Mixing Console with DFX

- Pad switch on mono channels
- Stereo channel with XLR, 1/4" and RCA inputs
- 12V gooseneck lamp socket for dark working environments
- Main stereo and mono out with XLR jacks and inserts
- 30 Mic preamps
- Dual digital effect engines, each with 16 programs plus one main parameter control, tap delay and foot switch jacks
- 28 direct outputs with pre-fader switch for multi-track recording
- Rec out with independent trim control
- Talkback Mic built-in
- Four stereo AUX returns, each with switches to route signal to AUX 1-4 (effect to monitor)
- Groups 1-4 and AUX 1-4 can be swapped for monitor console use
- Talkback mic built-in
- Variable LPF on mono output for subwoofer
- Six 12-segment level meters for main, group or AUX
- Independent solo level control
- 3-band channel EQ with swept mid-range on mono channels, 4-band EQ on stereo channels
- Six AUX mixing bus, two pairs with pre/post switch
- ON, SIGNAL and PEAK/SOLO LED indicators on each input channel

\* See Appendix I on page 32 for full specifications



PM 801

Single Rack Unit 8-Channel Mixer with Tone Control

- 8 balanced Mic/Line inputs
- Ultra low noise pre-amp circuitry offering up to 62 dB gain (Mic In)
- EQ and Direct Out features
- Mute control, Clip Indicator, and Tone control on each channel
- Pre-fader Out and AUX Bus In for connecting additional units to maximize the application flexibility
- +48V phantom power on every channel
- Built-in power supply - no wall wart!



ZX4

4 Zone Mixer

- Three stereo RCA line inputs with individual trim controls
- Paging microphone input and 1/4" TRS emergency input for emergency message broadcasting
- Four stereo zone outputs with independent source select switches and level controls
- Microphone ducking depth and EQ controls
- Utility output provides audio to general utility areas (foyers, restrooms, etc.)
- Utility output source selectable
- Stereo/Mono switch on zone 1 and 2
- Remote level controls can be wired to the four zones for applications requiring remote adjustment of audio levels



ZX2

2 Zone Mixer

- Three stereo RCA line inputs with individual trim controls
- Paging microphone input and 1/4" TRS emergency input for emergency message broadcasting
- Two stereo zone outputs with independent source select switches and level controls
- Subwoofer output on each zone
- High and low EQ controls on each zone
- Microphone ducking depth and EQ controls
- Utility output provides audio to general utility areas (foyers, restrooms, etc.)
- Utility output source selectable
- Stereo/Mono switch on zone 1 and 2
- Remote level controls can be wired to the two zones for applications requiring remote adjustment of audio levels

	ZX2	ZX4	PM 801	
Inputs	1	1	8	Microphone
	3 x stereo	3 x stereo	1 x mono	Stereo RCA
	√	√	–	Emergency Audio
Outputs	2	4	–	Zones
	√	√	–	Utility
	7	8	1	1/4" Jacks
Level Controls	√	√	√	
Zone EQ	2-band	N/A	N/A	
Microphone EQ	2-band	2-band	Tone controls	
Mic Depth Control	√	√	N/A	
Source Selection	√	√	N/A	
Source Link	√	√	N/A	
Size (rack spaces)	1 unit	1 unit	1 unit	
Weight	2.5 kg (5.5 lbs)	2.5 kg (5.5 lbs)	2.3 kg (5.3 lbs)	



# IMPACT SERIES

The Impact and Impact X series are easy-to-use mixing consoles that provide all the features you need for any project studio or live sound reinforcement. Models vary between 10 and 26 ultra-quiet Mic preamps with high headroom and phantom power, as well as two stereo line channels on every mixer. All mono channels feature inserts, for inclusion of external processors, and low-cut switches, for removing unwanted ground noise. A 3-band EQ with swept-mid is included on mono channels, and a 4-band EQ on stereo channels, giving you greater control over your audio. Four AUX sends and two stereo AUX returns can be used to connect a variety of outboard signal processors or to create special mixes to send to the Nexuses' monitor speakers. Impact X-models feature onboard 32-bit stereo digital effects processor with 100 preset programs plus one main parameter control, tap control and foot switch jacks. Output is achieved through XLR or 1/4" phone jacks, with an additional mono output topped with an adjustable LPF - ideal for use with subwoofers. The addition of mini stereo input/outputs makes these mixers perfect for anyone connecting MP3, MD or computer audio or recording devices. The Impact and Impact X mixers are ideal for houses of worship, small to medium-sized halls and project studios.



## IMPACT 8.4(X)

12-Channel Mic/Line Mixer (with DFX)

## IMPACT 16.4(X)

20-Channel Mic/Line Mixer (with DFX)

## IMPACT 12.4(X)

16-Channel Mic/Line Mixer (with DFX)

## IMPACT 24.4(X)

28-Channel Mic/Line Mixer (with DFX)

- Audiophile quality & ultra low noise
- Multiple low-noise mic preamps
- Mono channels have 3-band EQ with swept mid-range, 75Hz (18 dB/octave) low-cut filter, inserts and phantom power
- Two stereo channels with 4-band EQ
- 4 AUX sends, AUX 1 & 2 with XLR and 1/4" phone output jacks
- 32/40 bit digital stereo multi-effect processor with 100 programs, tap control and foot switch jacks (X models only)
- 2 stereo AUX returns with effect to monitor
- Low cut on each mono channel
- 2 PAD control on all 8 mono channels
- Main Stereo and Mono output with XLR and 1/4" phone jacks
- Mono output with variable low pass filter for subwoofer
- Tape input can be routed to AUX 1 and AUX 2
- Mini stereo I/O for MD, MP3 player/recorder
- Built-in switching power supply with universal connector, 100-240VAC 50/60Hz

	IMPACT 8.4(X)	IMPACT 12.4(X)	IMPACT 16.4(X)	IMPACT 24.4(X)	
Total Inputs	12	16	20	28	
	8	12	16	24	Mic
	8	12	16	24	Line
	4	4	4	4	Stereo*
	✓	✓	✓	✓	Stereo RCA
	✓	✓	✓	✓	Mini Stereo
Outputs	3	3	3	3	1/4" TRS
	✓	✓	✓	✓	XLR
	✓	✓	✓	✓	Phones
	✓	✓	✓	✓	Stereo RCA
	✓	✓	✓	✓	Mini Stereo
Channel EQ	3 -band with swept mid				
Level Meter	2 x 12-pt				
DFX	100 program (x models only)				
Dimensions (W x H x D)	510 x 112 x 437 mm ( 20" x 4.4" x 17.2" )	642 x 112 x 437 mm ( 25.3" x 4.4" x 17.2" )	774 x 112 x 437 mm ( 30.5" x 4.4" x 17.2" )	1038 x 112 x 437 mm ( 40.9" x 4.4" x 17.2" )	
Weight	7.2 kg ( 15.9 lbs )	8.7 kg ( 19.1 lbs )	10.5 kg ( 23.1 lbs )	13.5 kg ( 29.7 lbs )	

\*AUX inputs included

# AM SERIES



156 x 51 x 244 mm  
(6.2"x 2" x 9.6")  
1.1 kg (2.4 lbs)

## AM 120

1 Mic/Line 2 Stereo Input Compact Mixer

- Audiophile-quality mic preamps & ultra low noise
- 1 mic/line and 2 stereo channels
- 2-Band EQ on mono input channel
- 2T RTN & 2T REC for CD or tape recorder
- Dual 4-segment master level meter
- Headphones output with volume control
- Peak LED on mono input channel
- Balanced master output
- +48V phantom power



190 x 56 x 233 mm  
(7.5"x 2.2" x 9.2")  
1.5 kg (3.3 lbs)

## AM 220

2 Mic/Line 2 Stereo Input Compact Mixer

- Audiophile-quality & ultra low noise
- Two balanced Mic/Line inputs with 3-band EQ
- Two stereo inputs with 3-band EQ
- One stereo AUX return
- Post-fader EFX send on every input
- Global +48V phantom power
- Peak and VU Metering
- Peak indicators on each mono input channel
- 2T RTN assignable individually to Main or Control room
- Stereo EFX send cue for ease of monitoring individual channel
- Balanced master output with 60mm fader control



190 x 56 x 233 mm  
(7.5"x 2.2" x 9.2")  
1.5 kg (3.3 lbs)

## AM 240

2 Mic/Line 4 Stereo Input Compact Mixer

- Audiophile-quality & ultra low noise
- Two balanced Mic/Line inputs with 3-band EQ and low cut
- Four stereo inputs with +4/-10 select button
- Post-fader AUX send on every input
- Global +48V Phantom Power
- CTRL RM and headphones outputs
- Peak indicators on each mono input channel
- Convenient RCA stereo I/O for MD, MP3 player.
- Stereo EFX send cue for better monitoring individual channel
- Balanced master output with 60mm fader control



242 x 55 x 255 mm  
(9.5"x 2.2" x 8.9")  
1.7 kg (3.8 lbs)

## AM 440

4 Mic/Line 4 Stereo Input Compact Mixer

- Audiophile-Quality & ultra low noise
- 4 mono mic/line channels
- 4 stereo channels
- AUX send on each channel
- 75Hz low-cut filter on mono channel
- 3-band EQ on each channel
- +48V phantom power on mic channels
- Control room/Phones source matrix for maximum monitor flexibility
- EFX/AUX send cue for monitoring individual channel
- Balanced master output with 60mm fader control

\* See Appendix II on page 32 for full specifications

\* See Appendix II on page 32 for full specifications



190 x 56 x 233 mm  
(7.5" x 2.2" x 9.2")  
1.5 kg (3.3 lbs)

## AM 240D

2 Mic/Line 4 Stereo-In Compact Mixer with EFX

- Audiophile-quality & ultra low noise
- Two balanced Mic/Line inputs with 3-band EQ and low cut
- Four stereo inputs with +4/-10 select button
- Post-fader AUX send on every input
- 32/40-bit DSP with 100 EFX + creative Tap-delay
- Separated EFX route control assignable to main or monitor
- Global +48V Phantom Power
- Peak indicators on each mono input channel
- Convenient RCA stereo I/O for MD, MP3 player.
- Stereo EFX send cue for better monitoring individual channel
- Balanced master output with 60mm fader control



242 x 55 x 255 mm  
(9.5" x 2.2" x 8.9")  
1.7 kg (3.8 lbs)

## AM 440D

4 Mic/Line 4 Stereo-In Compact Mixer with EFX

- Audiophile-Quality & ultra low noise
- 4 mono mic/line channels
- 4 stereo channels
- AUX send on each channel
- 75Hz low-cut filter on mono channel
- 3-band EQ on each channel
- 32/40-bit DSP with 100 EFX + Tap-delay
- Separated EFX route control
- 2T return can be routed to Main or Control room individually
- +48V phantom power on mic channels
- EFX/AUX send cue for monitoring individual channel
- Balanced master output with 60mm fader control



AM D' models come with our own 32/40-bit DSP multi-effect processor with 100 preset programs as well as tap delay and numerous test tones.



Rack-mounting  
kit included

407 x 89 x 357 mm  
(16" x 3.5" x 14")  
4.8 kg (10.6 lbs)

## AM 642D

6 Mic/Line 4 Stereo 2 Groups 9-Band GEQ 100+Tap EFX Mixer

- Audiophile-quality & ultra low noise
- 6 Mic/Line channels with inserts and phantom power
- 4 stereo channels with 4-band EQ
- 3-band EQ with swept mid-range plus low cut on each mono channel
- 3 Aux sends, one with Pre/Post switch
- 32/40-bit digital stereo multi-effect processor with 100+ tap delay plus foot switch
- Stereo 9-band graphic EQ, assignable to main mix or aux 1 send
- 2 true subgroups with main L and R routing switches
- 2 stereo aux returns with effect to monitor level control
- Solo feature on each input and output
- XLR connectors available on main L / R output
- Built-in switching power supply with universal connector, 100-240VAC, 50/60Hz



Rack-mounting  
kit included

418 x 140 x 438 mm  
(16.5" x 5.5" x 17.2")  
5.9 kg (13 lbs)

## AM 844D

8 Mic/Line 4 Stereo 4 Groups 100+Tap EFX Mixer

- Audiophile-Quality & ultra low noise
- 8 Mic/Line channels with inserts and phantom power
- 4 stereo channels with 4-band EQ
- 4 true subgroups with main L and R routing switches and double-bused outs
- Direct outputs for multi-track recording
- 3-band EQ with swept mid-range plus low cut on each mono channel
- 18dB/oct, 75Hz low cut filter on each mic channels
- 4 aux sends, aux 1 & 2 with Pre/Post switch
- 32/40-bit digital stereo effect processor with 100 programs +Tap delay plus foot switch
- 4 stereo aux returns, 2 with effect to monitor
- Headphones, control room monitors and solo level control
- Control Room and Phones outputs with multi-input source matrix
- Built-in switching power supply with universal connector, 100-240VAC, 50/60Hz



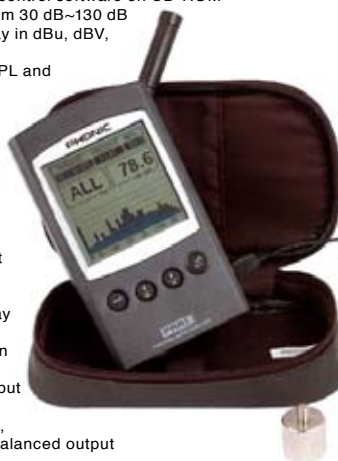


# PAA3

Handheld Audio Analyzer with USB 2.0 Interface

The PAA3 is a highly accurate handheld audio analyzer that gives sound engineers a rich array of sound analysis tools. Features include 31-band real time spectrum analysis, RT60, SPL and line meter, internal generator, EQ setting program, microphone calibration and speaker phase checking abilities. All functions and menus can be accessed through a central jog dial, leaving your other hand free to adjust audio settings. Easily upload information and settings to your computer via the built-in USB interface. The large LCD screen has a visible backlight to help you see in dark environments. With a battery life of 7 hours, the PAA3 is a multifunctional tool for every serious audio engineer.

- SPL meter calibration through sound level calibrator
- 4 standard response time
- 3 power modes: (1) Power Save (2) On (3) Off
- Audio test signals and desktop control software on CD-ROM
- Sound Pressure Level Meter from 30 dB~130 dB
- Line signal measurement display in dBu, dBV, or Volts (AC)
- 3 level range selection for dB SPL and line signal
- Maximum level display
- Peak hold display
- Adapter operation available
- 7 hours continuous operation with 4 AA batteries
- 31-band Real Time Spectrum Analyzer
- RT60 measurement
- Built-in calibrated measurement microphone
- Phase checker
- 31-band EQ setting value display (Boost/Cut)
- Memory and average calculation function
- USB 2.0 and XLR input and output sockets
- Noise generator with pink noise, 1 kHz and polarity test signal, balanced output



144.95 x 82.95 x 39.42 mm  
(5.7" x 3.26" x 1.55")  
354 g (0.78 lbs)

	PAA3	
Inputs/Outputs	✓	Built-in Omni-directional Mic
	✓	XLR Jacks (input and output)
	✓	USB Interface
Display	160 x 160	
Measurement Range	30 to 130 dB SPL	SPL (Mic Input)
	-50 to +40 dBu	dBu (Line Input)
	-52 to +38 dBV	dBV (Line Input)
	5 mV to 80 V	Voltage (Line Input)
Settings	A, C or Flat	Weighting
	ON/OFF	Peak Hold
	RESET	Maximum Level Display
	35ms, 125ms, 250ms, 1sec	Response Time
Noise Generators	✓	Pink noise
	✓	1 kHz Signal
	✓	Polarity Signal
Other Functions	✓	31-band RTA
	✓	Average Calculation
	✓	Phase Checker
	✓	Reverb Time Analyzer (RT60)
	✓	Memory
	✓	EQ Setting Value Display
Power Source	4 x AA batteries	
Battery Life	Up to 7 hours	

# **PAA6** *New*

2-Channel Audio Analyzer with Color Touch LCD



173 x 35 x 105 mm  
(6.8" x 1.38" x 4.13" )

The PAA6 is the latest and the greatest in Phonic's popular handheld audio analyzer series. All functions and menus are easily accessed through a 480 x 272 color touch-screen display. The PAA6 incorporates significantly improved versions of real time spectrum analyzer, RT60, tone generator, LEQ, EQ setting and phase checking from the PAA3. Moreover, the PAA6 audio tester provides engineers with an even wider array of essential sound analysis tools than ever before - now adding FFT, THD+N, polarity and scope functions to the mix, as well as two built-in mics that can take highly accurate measurements from multiple positions in any given room. A USB 2.0 connector and SD card slot have been included to assist in transferring information to and from your computer. This feature-rich, portable audio tester is sure to satisfy even the most discerning professional audio engineer.

- Powerful dual channel palm-size audio analyzer
- 480 x 272 color LCD touch screen
- Two built-in measurement condenser mics
- Tone generator includes pink noise, white noise, sine wave, sweep, polarity, triangle and square
- Useful functions include RTA, LEQ, RT-60, FFT, THD+N, polarity, phase, scope and volt meter
- Elegant graphical user interface
- Long-lasting rechargeable lithium-ion battery system
- USB 2.0 port and SD card slot included for storing and retrieving data
- 20 - 140 dB SPL meter
- Mac / PC remote link software included
- Compatible with Mac OSX and Windows XP / Vista



PAA6		
Inputs / Outputs	Condenser mic	Build-in Mic
	XLR input and output	XLR Jack
	USB Interface	USB
Display	480 x 272, 16-bit, full color touch screen	
Range	30~130 dB SPL / -85~25 dBu	Mic in / Line In
Memory	SD card and internal memory	
Generator	Sine, triangle, square, polarity, sweep, pink noise, white noise	
RTA	20 Hz ~ 20 KHz, all frequencies	Frequency
	EQ Cut or Boost	EQ Setting
	CH1+CH2, CH1-CH2, CH2-CH1	Subtract / Sum
	30 ~130 dB, 60dB display range, eg. 70~130, 60~120, 50~110	Dynamic Range
	+ / - 5dB steps on Y-Axis B35	dB-scale setting
	dB SPL, dBu, dBV, Volt	Unit
	1/1, 1/3, 2/3, 1/6	Octave
	A. B. C. Flat	Weighted
FFT	13 selectable bandwidths	Frequency Range
	CH1+CH2, CH1-CH2, CH2-CH1	Subtract / Sum
	dB SPL, dBu, dBV, Volt	Unit
	1/1, 1/3, 2/3, 1/6	Octave
	A. B. C. Flat	Weighted
RT-60	dB SPL, dBu, dBV, Volt	Unit
	Internal / External	Trigger
THD+N	less than 0.01% 20~20KHz +4 dBu	
Meter	30~130 dB SPL / -85~25 dBu / -87.2~22.8 dBV / 0.0436mV~13.8V	
Phase	Phase Correlation (out of phase or in phase)	Phase Dgree
Oscillator Scope	CH1, CH2, CH1+CH2	Trigger
Polarity	Polarity checker (Negative / Positive)	
LEQ	A. B. C. Flat	Weighted
	Selectable Frequency	KHz

# POWERPOD SERIES

Built to meet remarkably high standards, the Powerpod powered mixers from Phonic feature super-smooth controls, low noise, brawny amplification, and sturdy constructions for maximum reliability. The series begins with the entry level Powerpod 410 and advances to the more sophisticated Powerpods K-12 Plus and K-16 Plus, giving musicians more flexibility, functions and power to cater to larger audiences. Phonic has designed the entire Powerpod series with varying input numbers, different signal routing capabilities, and various amplification levels - ensuring there is a perfect Powerpod for everyone, depending on venue size, the size of the audience and the different needs of Musicians and engineers.



## POWERPOD 410

100W 4-Channel Powered Mixer with Variable Delay

- 100W output power
- 4 Mic/line channels
- Variable digital delay with time and repeat control
- Amplifier power assignable with additional 1/4" stereo jack
- 2-band EQ on mono channels



## POWERPOD 620 PLUS

200W 6-Channel Powered Mixer with DFX

- 100W + 100W / 4 ohms stereo power amplifier for Main L/R or Main/Monitor (Bridge mono, 200W / 8 ohms)
- 32/40 bit digital multi-effect processor with 100 programs plus foot switch jack
- Six balanced Mic inputs
- 8 Line inputs
- Two Super Hi-Z inputs optimized for direct instrument input
- 2-band channel EQ
- 7-band graphic EQ
- Pad control on channels 1~4
- AUX input
- Stereo RCA I/O
- +48V phantom power
- Built-in limiters
- Monitor and effect sends on each input channel
- Drive level / Effect out master control to the input of built-in effect processor
- Wooden box with Vinyl leather plus steel corner protection



## POWERPOD 740 PLUS

440W 7-Channel Powered Mixer with DFX

- 220W + 220W / 4 ohm stereo power amplifier for Main L/R or Main/Monitor (Bridge mono, 440W / 8 ohm)
- 32/40 bit digital multi-effect processor with 100 programs plus foot switch jack
- Seven balanced Mic inputs
- 10 Line inputs
- Two super Hi-Z inputs optimized for direct instrument input
- 3-band channel EQ
- Dual 7-band graphic equalizers with In/Out switches for Main L/R or Main/Monitor
- Pad control on channels 1-4
- One AUX input
- Monitor and effect sends on each input channel
- +48V phantom power
- Two built-in limiters
- Rec out with trim control for record level matching
- Mains power switchable between 115 VAC and 230 VAC



\* See Appendix IV on page 33 for full specifications





## POWERPOD 780 **PLUS**

600W 7-Channel Powered Mixer with DFX

- 300W + 300W / 4 ohm stereo power amplifier for Main L/R or Main/Monitor
- 32/40-bit digital multi-effect processor with 100 programs plus foot switch jacks
- Seven balanced Mic inputs
- 10 Line inputs
- Two super Hi-Z inputs optimized for direct instrument input
- 3-band channel EQ
- Dual 7-band graphic equalizers with In/Out switches for Main L/R or Main/Monitor
- Rumble filters for Mic inputs
- Pad control on channels 1-4
- One AUX input
- Monitor and effect sends on each input channel
- +48V phantom power
- Two built-in limiters
- Rec out with trim control for record level matching
- Mains power switchable between 115 VAC and 230 VAC



## POWERPOD 820

250W 5-Channel Powered Mixer with DFX

- 2 x 120 Watt power amplifiers
- 5 input channel mixer
- 7-band Main EQ control and Treble-Bass channel EQ
- +48V phantom power for condenser mics
- 8-preset DSP effects with enhanced 32-bit processing and two main trim (parameter) controls
- Super Hi-Z inputs and stereo line inputs
- Level meters for main outputs with built-in output limiter indicator
- Headphone output with volume control
- Rugged light weight plastic enclosure



## POWERPOD 865 **PLUS**

600W 8-Channel Molded Powered Mixer with Graphic EQ and DFX

- Dual position 45 degree angular molded cabinet
- 300W + 300W / 4 ohms stereo power amplifier for Main L/R or Main/Monitor (Bridge mono, 600W / 8 ohms)
- DFX, our 32/40-bit digital multi-effects processor with 100 preset programs plus tap delay and test-tones
- Wireless Mic module slot
- 8 balanced Mic inputs
- 10 Line inputs
- Two super Hi-Z inputs optimized for direct instrument input
- 3-band channel EQ (two channels with swept mid-range)
- Dual 7-band graphic equalizers with feedback detection system
- Pad control on channels 1-6
- Monitor and effect sends on each input channel
- Stereo AUX input
- +48V phantom power
- Vocal eliminator for karaoke application
- sPs for smoother high frequencies and enhanced low-end output
- Two built-in limiters
- Two Speakon-type connectors and five 1/4" phone jacks for speaker connection

\* See Appendix IV on page 33 for full specifications



## POWERPOD 885 **PLUS**

800W 8-Channel Molded Powered Mixer with Graphic EQ and DFX

- Dual 45 degree angular molded cabinet
- 400W + 400W / 4 ohms stereo power amplifier for Main L/R or Main/Monitor (Bridge mono, 800W / 8 ohms)
- Dual DFX, our 32/40-bit digital multi-effects processor with 100 preset programs plus tap delay and test tones
- Wireless Mic module slot
- 8 balanced Mic inputs
- 10 Line inputs
- Two super Hi-Z inputs optimized for direct instrument inputs
- 3-band channel EQ (two channels with sweepable mid-range)
- Dual 7-band graphic equalizers with feedback detection system
- Pad control on channels 1-6
- Monitor and effect sends on each input channel
- Stereo AUX input
- +48V phantom power
- Vocal eliminator for karaoke application
- sPs for smoother high frequencies and enhanced low-end output on speakers
- Two built-in limiters
- Rec out with trim control for record level matching
- Two Speakon-type connectors and five 1/4" phone jacks for speaker connection



## POWERPOD 1062 **PLUS**

750W 9-Channel Powered Mixer with DFX

- 375W / 4 ohms stereo power amplifier for Main L/R or Mono/Monitor (Bridge mono, 750W / 8 ohms)
- DFX, our 32/40-bit digital multi-effect processor with 100 programs plus tap delay and test tones
- 9 balanced Mic inputs
- 12 Line inputs
- Two super Hi-Z inputs optimized for direct instrument inputs
- 3-band channel EQ
- Dual 8-band graphic equalizers with in/out switches for Main L/R and Monitor or Main L/R
- Rumble filters for channels 1-6
- Pad control on channels 1-6
- Monitor and effect sends on each input channel
- +48V phantom power
- Two built-in limiters
- Rec out with trim control for record level matching
- Mains power switchable between 115 VAC and 230 VAC



## POWERPOD 1860 **PLUS**

800W 12-Channel Powered Mixer with Graphic EQ and DFX

- 400W + 400W / 4 ohms stereo power amplifier (bridgeable and patchable)
- DFX, our 32/40-bit digital multi-effect processor with 100 programs plus tap control, test tone generator and foot switch on/off jack
- 8 balanced Mic inputs with inserts
- Total of 12 Line inputs
- Two stereo Line input channels capable of accepting RCA/Phone inputs
- 3-band channel EQ
- Stereo 7-band graphic EQ
- Four AUX sends (AUX 1/2 are pre-fader and EFX 1/2 are post-fader)
- Two stereo AUX returns, each can be routed to AUX 1 & 2 sends (effect to monitor)
- Stereo RCA I/O for CD/TAPE external sources
- Grouped +48V real phantom power for broader application
- Mono output for extra zone filling or as subwoofer processing source
- PFL on each input and AFL on each output
- Standby switch to mute Ch1 ~ Ch12 for playing music between sets
- Zone 2 output for side fill or another PA system
- Headphone/control room output with rotary level control
- One professional Speakon-type jack and two 1/4" jacks per channel for speaker connection
- Rugged metal main chassis with integrated handle
- Less weight achieved by high-efficiency switching power supply
- Molded protective cover prevents scratching or damage to mixer
- Mains power switchable between 115 VAC and 230 VAC

\* See Appendix IV on page 33 for full specifications



## POWERPOD K-12 **PLUS**

1000W 12-Channel Powered Mixer with Graphic EQ and Dual DFX

- 500W + 500W / 4 ohms stereo power amplifier (bridgeable and patchable)
- Dual DFX, our 24/32-bit digital multi-effects processor with 100 programs with tap delay and test-tones
- 8 balanced Mic inputs (8 with inserts)
- 12 Line inputs
- Two stereo input channels with 1/4" and RCA inputs
- 3-band channel EQ with swept mid-range
- Stereo 7-band graphic EQ
- Four AUX sends (AUX 2 can be set to pre- or post-fader)
- Two stereo returns - each can be routed to AUX 1 & 2 sends (effect to monitor)
- +48V individual phantom power switches
- Mono output with variable low pass filter from 60 Hz up to 160 Hz
- PFL on each input and AFL on each output
- Standby switch for playing music between sets
- Zone 2 output for side fill or another PA system
- Headphone output with separate rotary level control
- One Speakon-type connector and two 1/4" phone jacks per channel for speaker connection
- Molded protective cover prevents scratching or damage to mixer
- Rugged metal main chassis with integrated handle
- Low weight achieved by high-efficiency switching power supply



## POWERPOD K-16 **PLUS**

1000W 16-Channel Powered Mixer with Graphic EQ and Dual DFX

- 500W + 500W / 4 ohms stereo power amplifier (bridgeable and patchable)
- Dual DFX, our 24/32-bit digital multi-effects processor with 100 programs, tap delay and test-tones
- 14 balanced Mic inputs (12 with inserts)
- 16 Line inputs
- Two stereo Line input channels
- 3-band channel EQ with swept mid-range
- Stereo 7-band graphic EQ with feedback detection system
- Four AUX sends (AUX 2 can be set to pre- or post-fader)
- Two stereo returns - each can be routed to AUX 1 & 2 sends (effect to monitor)
- +48V individual phantom power switches
- Vocal eliminator for karaoke application
- sPs for smoother high frequencies and enhanced low-end output on speakers
- Mono output with variable low pass filter from 60 Hz up to 160 Hz
- PFL on each input and AFL on each output
- Standby switch for playing music between sets
- Zone 2 output for side fill or another PA system
- Headphone output with separate rotary level control
- One Speakon-type connector and two 1/4" phone jacks per channel for speaker connection
- Molded protective cover prevents scratching or damage to mixer
- Rugged metal main chassis with integrated handle

\* See Appendix IV on page 33 for full specifications



## KA920

460W Karaoke Powered Mixer

- 2 x 460W @ 4 ohms
- 2 x 300W @ 8 ohms
- 32/40-Bit DSP reverb and professional digital echo for superior vocal enhancement
- +/- 8-Step Digital Key Controller changes the key of the music without changing the tempo
- On-board video switching with four sets of A/V Inputs, two audio outputs and two video outputs
- Gain and Echo Send control on each microphone input
- Ch 1-4 Mic inputs each with individual 3-band EQ
- One AUX output and one stereo AUX input
- 3-band EQ on music input
- Balance control on master Music and Mic sections
- High, Mid, Low controls on Music source input
- Individual Master Microphone and Music volume controls
- Multi-functional remote control
- Switching-mode power supply
- 3 RU rack mountable





## ICON SERIES

Icon Series power amplifiers are designed with the needs of sound contractors in mind. The binding post outputs allow for connection to standard low impedance speakers. Barrier strip outputs enable 25V, 70V and 100V Line operation. Each amplifier channel has a separate toroidal secondary transformer that provides full electrical isolation and ensures maximum audio separation. Features like power up muting, full short-circuit temperature, DC offset protection and a built-in 45 Hz subsonic filter, combine to make the Icon Series an attractive, cost effective solution for any audio installation.

- Barrier strip connection determines output mode: 25V, 70V, 100V and low impedance outputs available simultaneously
- Rear panel detented gain controls
- Stereo, bridge, and parallel operating modes
- XLR inputs and outputs for easy signal pass through in multi-amp setups
- Built-in 45 Hz subsonic filter prevents speaker transformer saturation with minimal effect on program material



132 x 480 x 428 mm (5.2" x 18.9" x 16.9")  
20.2 kg (44.5 lbs)

### ICON 300

300W Contractor Amp

- Output power: 2 x 150W @ 70V or 100V
- Automatic dual-speed, high-efficiency cooling fan
- XLR and barrier strip inputs
- Full short-circuit, temperature and DC offset protection
- Toroidal output transformers provide full electrical isolation and meet worldwide safety standards



132 x 480 x 428 mm (5.2" x 18.9" x 16.9")  
24.3 kg (53.5 lbs)

### ICON 700

700W Contractor Amp

- Output power: 2 x 350W @ 70V or 100V
- Automatic dual-speed, high-efficiency cooling fan
- XLR and barrier strip inputs
- Full short-circuit, temperature and DC offset protection
- Toroidal output transformers provide full electrical isolation and meet worldwide safety standards

	ICON 300	ICON 700	
Output Power	300W + 300W	550W + 550W	2Ω stereo
	200W + 200W	400W + 400W	4Ω stereo
	540W	1100W	4Ω bridge
Constant Voltage Output	150W + 150W	350W + 350W	100V or 70V
	120W + 120W	280W + 280W	25V
Frequency Response	50 Hz - 50 kHz		
Inputs	√	√	Barrier Strip
	√	√	XLR
Outputs	√	√	Barrier Strip
Protection	√	√	Thermal
	√	√	Short Circuit
	√	√	DC Offset
Size (Rack Space Units)	2	2	
Weight	20.2 kg (44.5 lbs)	24.3 kg (53.5 lbs)	

# XP SERIES



Built around robust and advanced toroidal transformers, Phonic XP Series power amplifiers deliver clean power on demand. The advanced protection circuitry guards against short circuit and open circuit, and also protects against ultrasonic and RF interference. A dual mono, high current power supply increases reliability and performance, and the variable speed fans effectively cool the amp with rear to front air flow and protect against overheating. Phonic's XP Power Amplifiers are specially designed for professionals who value high power, audio clarity, reliability and lasting performance.

- High continuous current output from robust toroidal transformer
- Switchable input peak limiter and selectable high pass filter (30Hz, 50Hz) to reduce distortion and protect speakers
- Bridge mono and parallel mode LEDs
- Fast Recovery design for lower distortion if clipping occurs
- Active balanced inputs for low noise
- Front mounted detented gain controls for easy access
- Signal level at -40, -20, -10, protect and clip LED indicators to monitor performance
- Ground Lift switch to prevent humming
- Two ventilation variable speed fans
- Selectable stereo, parallel & bridge mono amp modes
- Speakon-type connectors and binding post speaker outputs
- XLR & 1/4" TRS connectors for maximum input flexibility
- Advance protection circuitry guards against: short circuit, open circuit, thermal, ultrasonic, and RF protection, stable into mismatched loads, on/off muting, DC fault output crowbar

## XP 1000

1120W Power Amp

- Output Power: 560W @ 2 ohms stereo, 440W @ 4 ohms stereo
- Requires two standard rack units for mounting

## XP 2000

1920W Power Amp

- Output Power: 960W @ 2 ohms stereo, 660W @ 4 ohms stereo
- Requires two standard rack units for mounting

## XP 3000

2800W Power Amp

- Output Power: 1400W @ 2 ohms stereo, 1100W @ 4 ohms stereo
- Requires three standard rack units for mounting

## XP 3100

2800W Power Amp with Subwoofer

- Output Power: 1400W @ 2 ohms stereo, 1100W @ 4 ohms stereo
- XLR & 1/4" TRS connectors for maximum input flexibility
- Two low pass filters with selectable frequencies at 60, 90 or 120 Hz for subwoofer use
- Requires three standard rack units for mounting

## XP 5000

5000W Power Amp

- Output Power: 2500W @ 2 ohms stereo, 1800W @ 4 ohms stereo
- High-current toroidal transformers for greater two-ohm power and low noise
- Independent user-defeatable clip limiters reduce distortion
- XLR, 1/4" and barrier strip inputs all included
- Requires three standard rack units for mounting

## XP 5100

5000W Power Amp with Subwoofer

- Output Power: 2500W @ 2 ohms stereo, 1800W @ 4 ohms stereo
- Two low pass filters with selectable frequencies at 60, 90 or 120 Hz for subwoofer use
- High-current toroidal transformers for greater two-ohm power and low noise
- Independent user-defeatable clip limiters reduce distortion
- XLR, 1/4" and barrier strip inputs all included
- Requires three standard rack units for mounting



\* See Appendix VII on page 34 for full specifications



# MAX SERIES

All 5 of the Phonic MAX series power amplifiers provide a range of different power options and are big on added features. Input to the MAX amps is achieved via the XLR and 1/4" jacks, and output is achieved through either the professional standard speakon connectors or traditional binding posts. Common to all models are such features as ground switches, user defeatable clip limiters, selectable high pass filters, as well as the ability to choose stereo, parallel or bridge operating modes. All of this, plus the high efficiency circuitry design and ultra-cool operation makes the MAX series amplifiers ideal for real world, large scale application.



## MAX 250

160W Power Amp

- Output power: 80W @ 4 ohms stereo, 60W @ 8 ohms stereo
- Studio quality performance with very low noise and wide dynamic range
- Class H high efficiency circuitry design
- Ultra-low total harmonic distortion
- High damping factor provides exceptional loudspeaker motion control
- Detented level controls for precise repeatability
- Signal and CLIP indicators to monitor performance
- Short circuit, thermal, subsonic, RF protection, output DC offset, over-heat protection and power on/off muting
- Convection cooling system dissipates heat through the heat sink and chassis for noise-free operation
- One rack unit



## MAX 500

240W Power Amp

- Output power: 120W @ 4 ohms stereo, 90W @ 8 ohms stereo
- Studio quality performance with very low noise and wide dynamic range
- Class H high efficiency circuitry design
- Ultra-low total harmonic distortion
- High damping factor provides exceptional loudspeaker motion control
- Detented level controls for precise repeatability
- Signal and CLIP indicators to monitor performance
- Protect indicator
- Short circuit, thermal, subsonic, RF protection, output DC offset, over-heat protection and power on/off muting
- Convection cooling system dissipates heat through the heat sink and chassis for noise-free operation
- One rack unit



## MAX 860 PLUS

600W Power Amp

- Output power: 300W @ 4 ohms stereo, 200W @ 8 ohms stereo
- High-current toroidal transformers for greater power and low noise
- Balanced XLR input jacks
- Binding post and Speakon-type outputs
- Front mounted gain controls for easy access
- Signal and Peak LED indicators to monitor performance
- Short circuit, thermal, subsonic, RF protection, output DC offset
- Power on/off muting



## MAX 1500 PLUS

900W Power Amp

- Output power: 450W @ 4 ohms stereo, 280W @ 8 ohms stereo
- High-current toroidal transformers for greater power and low noise
- Balanced XLR input jacks
- Binding post and Speakon-type outputs
- Front mounted gain controls for easy access
- Signal and Peak LED indicators to monitor performance
- Short circuit, thermal, subsonic, RF protection, output DC offset
- Power on/off muting



## MAX 2500 PLUS

1500W Power Amp

- Output power: 750W @ 4 ohms stereo, 500W @ 8 ohms stereo
- High-current toroidal transformers for greater power and low noise
- Balanced XLR input jacks
- Binding post and Speakon-type outputs
- Front mounted gain controls for easy access
- Signal and Peak LED indicators to monitor performance
- Short circuit, thermal, subsonic, RF protection, output DC offset
- Power on/off muting

\* See Appendix VIII on page 34 for full specifications



# NEXUS SERIES

The Nexus Active Speakers are the successors to the Phonic Performer series - the world's first wireless professional audio speakers. The Nexus Speakers are able to wirelessly communicate with your mixer through Phonic's WM series of wireless transmitters and receivers. For a completely wireless set up, they can also be used with Phonic's versatile UM wireless microphones.

## Optional Accessories:

- Wireless microphone systems (UM31, UM41, UM51)
  - UM31: Wireless Handheld System
  - UM41: Wireless Lavalier System
  - UM51: Wireless Head-set System
- Wireless transmitters & receivers (WM-SYS1, WM-SYS2)



690 x 440 x 340 mm  
(27.2" x 17.3" x 13.4")

\* See Appendix IX on page 35 for full specifications

## NEXUS A315

Wireless 15" 160W Active Speaker with Wireless Capabilities

- Bi-amplified design with 160 Watts (RMS)
- Switchable Mic/Line balanced input
- Low cut filter: 75 Hz, 18 dB / octave
- Contour switch with 5 dB boost @ 120 Hz (1/3 octave), 5 dB boost @ 10.5 kHz (1/3 octave)
- Crossover point at 2.5 kHz
- Built in limiter for overload protection and limiter indicator
- Wireless UHF system
- Lightweight speaker cabinet with dynamic sound
- Wireless modules eliminate need to lay speaker cable - making setup faster and easier

## NEXUS A612

Wireless 12" 275W Active Speaker with Wireless Capabilities

- Bi-amplified design with 275 Watts (RMS)
- Switchable Mic/Line balanced input
- Low cut filter: 75 Hz, 18 dB / octave
- Contour switch with 5 dB boost @ 120 Hz (1/3 octave), 5 dB boost @ 10.5 kHz (1/3 octave)
- Built in limiter for overload protection and limiter indicator
- Wireless UHF system
- Lightweight speaker cabinet with dynamic sound

## NEXUS A815

15" 400W Active Speaker with Wireless Capabilities

- Bi amplified design with 400 Watts (RMS)
- Switchable Mic/Line balanced input
- Low cut filter: 75 Hz, 18 dB / octave
- Contour switch with 5 dB boost @ 120 Hz (1/3 octave), 5 dB boost @ 10.5 kHz (1/3 octave)
- Crossover point at 2.5 kHz
- Built in limiter for overload protection and limiter indicator
- Wireless UHF system
- Lightweight speaker cabinet with dynamic sound



645 x 495 x 440 mm ( 25.4" x 19.5" x 17.3")  
24 kg ( 52.9 lbs)

## NEXUS A915SB

900W Active 15" Subwoofer

- Built-in 450 Watt (RMS) amplifier
- Balanced XLR input and output
- Low pass filter with cut frequency selectable between 80, 120 and 160 Hz
- Built in protection circuitry
- Lightweight cabinet with dynamic sound
- 128 dB Max SPL (1 Watt @ 1 meter)
- 22k ohm input impedance
- 35mm pole mounting point

## NEXUS A935SB

900W Active 15" Subwoofer with Powered Output

- Built-in 250 Watts (RMS) amp for the subwoofer and 2 x 100 Watts (RMS) for external full range speakers
- Balanced XLR input and unbalanced XLR output
- Two 1/4" phone jack outputs for powering passive speakers with 100 Watts of power (per channel)
- Low pass filter with cut frequency selectable between 80, 120 and 160 Hz
- Built in protection circuitry
- Lightweight cabinet with dynamic sound
- 126.5 dB Max SPL (1 Watt @ 1 meter)
- 22k ohm input impedance
- 35mm pole mounting point

## Optional Accessories

For more information, see page 28 and 29.



HT-100

UM-R11

BT-200

MH-20

ML-10

WM40-L(R)

WM60

WM70



# CENTER SERIES

The Phonic Center loudspeakers provide high power handling, low distortion, and consistent polar response in compact, scratch-proof enclosures. The Center speakers come in 2-way and subwoofer models, and feature 10" to 18" low-frequency drivers matched with 1" compression drivers (with exception to subwoofer models). The Phonic Center speakers have a number of sound reinforcement applications: as main front-of-house loudspeakers in small venues, as floor monitors for musicians (Center 12M), for bass enhancement ('SB' models), or as side-fill loudspeakers in larger systems. Most models can be suspended from ceilings and angled for better coverage, or mounted onto stands, poles and trusses. With the versatility of the range, the set-up possibilities are virtually endless with the Phonic Center series.

- Constructed from A-grade MDF and finished with anti-scratch paint
- Extremely high power handling in a light weight, compact enclosure
- Integrated passive crossover offered on all 2-way models
- Incredible fidelity and outstanding high and low frequency performance



## CENTER 10

10" 2-Way Stage Speaker

- Frequency response: 60Hz-20kHz
- Coverage pattern: 90 degrees x 60 degrees nominal
- Power rating: 200W RMS, 400W Program
- 10" Differential drive woofer
- 1" compression driver
- Forged eyebolts for fixed installation

## CENTER 12

12" 2-Way Stage Speaker

- Frequency response: 55Hz-18kHz
- Coverage pattern: 90 degrees x 60 degrees nominal
- Power rating: 300W RMS, 600W Program
- 12" Differential drive woofer
- 1" compression driver
- Forged eyebolts for fixed installation

## CENTER 15

15" 2-Way Stage Speaker

- Frequency response: 50Hz-18kHz
- Coverage pattern: 90 degrees x 60 degrees nominal
- Power rating: 400W RMS, 800W Program
- 15" Differential drive woofer
- 1" compression driver
- Forged eyebolts for fixed installation



## CENTER 12M

12" 2-way Stage / Floor Monitor Speaker

- Frequency response: 55Hz-18kHz
- Coverage pattern: 90 degrees x 60 degrees nominal
- Power rating: 300W RMS, 600W Program
- 12" Differential drive woofer
- 1" compression driver



## CENTER 215

Dual 15" 2-Way Stage Speaker

- Dual 15", 2-way, speaker cabinet system
- Frequency response: 45Hz-18kHz
- Coverage pattern: 90 degrees x 60 degrees nominal
- Power rating: 800W RMS, 1600W program
- Dual 15" Differential drive speakers
- 1" compression driver for mids and highs

## CENTER 215SB

Dual 15" Subwoofer

- Frequency Response : 40Hz - 250Hz
- Power Rating (Continuous/Program): 600W/1200W
- Sensitivity (1w @ 1m): 96dB SPL
- Dual 15" Differential drive woofer
- Nominal Impedance: 4 ohms parallel



## CENTER 18SB

18" Subwoofer

- Frequency response: 35Hz-200Hz
- Power rating: 500W RMS, 1000W program
- Rugged, plywood construction and internal bracing reduces acoustic losses
- Top-mounted pole receptacle for easy expansion

## CENTER 218SB

Dual 18" Subwoofer

- Frequency Response : 40Hz - 350Hz
- Power Rating (Continuous/Program): 1000W/2000W
- Sensitivity (1w @ 1m): 100dB SPL
- Dual 18" Differential drive woofer
- Nominal Impedance: 4 ohms parallel

\* See Appendix VI on page 34 for full specifications

# IMPRESSION SERIES



## IMPRESSION 12 **PLUS**

12" 2-Way Stage / Floor Monitor Speaker

- Versatile use as a floor monitor or mounted as a raised sound reinforcement speaker
- Power handling : 250Watts (RMS) / 500Watts (Program)
- High sound pressure level: 96 dB SPL @ 1 W / 1 M
- Frequency response: 55 Hz ~ 20 kHz
- 1.75" (44 mm) diaphragm tweeter
- Constant directivity horn with 60 x 90 degrees of coverage
- HF driver protection system
- Trapezoidal enclosure for array system
- One 35 mm socket at bottom for stand or pole mounting
- Professional speaker connectors and 1/4" phone jacks (In and Link Out)
- Solid steel grille protection



## IMPRESSION 15SB **PLUS**

15" Subwoofer

- Power handling : 500Watts(RMS), 1000Watts(Program)
- High sound pressure level: 98 dB SPL @ 1 W / 1 M
- Frequency response: 38 Hz ~ 250 Hz
- Durable die-cast handles
- One 35 mm socket on top for pole mounting
- Speakon-type connectors and 1/4" phone jacks (In and Link Out)
- Solid steel grille protection



## IMPRESSION 15 **PLUS**

15" 2-Way Stage / Floor Monitor Speaker

- Versatile use as a floor monitor or mounted as a raised sound reinforcement speaker
- Power handling: 300 Watts (RMS) / 600 Watts (Program)
- High sound pressure level: 97 dB SPL @ 1 W / 1 M
- Frequency response: 48 Hz ~ 20 kHz
- 1.75" (44 mm) diaphragm tweeter
- Constant directivity horn with 90 x 60 degrees of coverage
- HF driver protection system
- Trapezoidal enclosure for array system
- One 35 mm socket at bottom for stand or pole mounting
- Speakon-type connectors and 1/4" phone jacks (In and Link Out)
- Solid steel grille protection



## IMPRESSION 18SB **PLUS**

18" Subwoofer

- Power handling : 700Watts (RMS) / 1400Watts (Program)
- High sound pressure level: 99 dB SPL @ 1 W / 1 M
- Frequency response: 33 Hz ~ 250 Hz
- Durable die-cast handles
- One 35 mm socket on top for pole mounting
- Speakon-type connectors and 1/4" phone jacks (In and Link Out)
- Solid steel grille protection

\* See Appendix X on page 35 for full specifications

# SEM SERIES



## SEM 710

10" 2-way Stage/Floor Speaker

- Double duty: use as a floor monitor or mounted as a raised sound reinforcement speaker
- Power handling :160 W (Peak); 80W (Program)
- Frequency response: 65 Hz ~ 20 KHz
- High sound pressure level, 96 dB SPL @ 1W / 1M
- 10" heavy-duty woofer and piezo tweeter
- 8 ohm nominal load
- Built-in handle
- 35 mm stand adapter built-in
- Dual 1/4" phone jacks

## SEM 712

12" 2-way Stage/Floor Speaker

- Double duty: use as a floor monitor or mounted as a raised sound reinforcement speaker
- Power handling: 300 W (Peak), 150W (Program)
- Frequency response: 60 Hz ~ 20 KHz
- High sound pressure level, 95 dB SPL @ 1W / 1M
- 12" heavy-duty woofer and piezo tweeter
- 8 ohm nominal load
- Built-in handle
- 35 mm stand adapter built-in
- Dual 1/4" phone jacks

## SEM 715

15" 2-way Stage/Floor Speaker

- Double duty: use as a floor monitor or mounted as a raised sound reinforcement speaker
- Power handling: 600W (Peak), 400 W (Program), 200W (RMS)
- Frequency response: 50 Hz ~ 20 KHz
- High sound pressure level, 98 dB SPL @ 1W / 1M
- 15" heavy-duty woofer and piezo tweeter
- 8 ohm nominal load
- Built-in handle
- 35 mm stand adapter built-in
- Dual 1/4" phone jacks

\* See Appendix XI on page 35 for full specifications



# CONTRACTOR SPEAKERS



## SE 206

5 1/4" 2-Way Molded Speaker

- Extended bass response
- Lightweight plastic enclosure
- Internal threaded inserts
- U-mount bracket included
- Optional universal swivel mounting bracket



## SE 207

6 1/2" 2-Way Molded Speaker

- Power Capacity: 50 Watts
- Sensitivity: 90 dB SPL @ 1W / 1M
- Frequency Response: 70 Hz ~ 20 kHz
- 1" Tweeter and 6 1/2" Woofer
- U-mount Bracket included

## SEp 206

Powered 5 1/4" Molded Speaker

- Built-in 20W power amplifier
- One XLR (female) input jack
- Frequency Response: 80 Hz ~ 16 kHz
- 1" Tweeter and 5 1/4" Woofer
- U-mount Bracket included

## SEp 207

Powered 6 1/2" Molded Speaker

- Built-in 20W power amplifier
- One XLR (female) input jack
- Frequency Response: 70 Hz ~ 20 kHz
- 1" Tweeter and 6 1/2" Woofer
- U-mount Bracket included



## VERSATAP 30

4" 2-way Speaker with Transformer

- Power Capacity: 30W @ 8 Ohm
- Frequency Response: 120 Hz - 20 kHz
- Sensitivity: 84 dB SPL @ 1W/1M, 1 kHz
- 4" poly carbon woofer and 1" soft dome
- Transformer with 4 taps positions (2, 4, 8, 16W) and 30W (8 Ohm) bypass
- Moisture resistant aluminum enclosure available in black or white
- Lightweight and compact
- U-mount bracket included

## VERSATAP 50

6 1/2" Molded Speaker with Transformer

- Power Capacity: 50W @ 8 Ohm
- Frequency Response: 75 Hz - 20 kHz
- Sensitivity: 90 dB SPL @ 1W/1M, 1 kHz
- 6.5" poly carbon woofer and 1" soft dome
- Transformer with 4 taps positions (2.5, 5, 10, 20W) and 50W (8 Ohm) bypass
- Moisture resistant lightweight plastic enclosure
- U-mount bracket included

### Optional Accessories:

270° Universal Swivel Mount (RK15)

# STUDIO MONITORS



Phonic Active Studio Monitors produce extremely accurate, crystal clear sound. Featuring a bi-amplified design with outputs starting at 70 Watts (program) and 140 Watts (peak). They also feature bi-colored On/Clip Indicators, built-in overload protection circuits, and incredibly flat frequency response. Use these speakers in acoustically perfect or challenging environments for consistent performance and quality every time.

\* See Appendix III on page 32 for full specifications

## P5A

210W 2-Way High Resolution Active Speaker

- Bi-amplified design with 140W for the low frequencies and 70W for the highs
- Flat response from 70 Hz to 20 kHz
- Extremely wide sweet spot and good imaging
- Built-in speaker response controls
- 5" Woofer, 1" silk-dome tweeter
- Built-in adjustable high match, low match
- Room Compensation
- Magnetically shielded
- Overload protection
- Front bi-color (On/Clip) indicator
- XLR and 1/4" inputs
- High grade MDF wooden cabinet

## P6A

210W 2-Way High Resolution Active Speaker

- Bi-amplified design with 140W for the low frequencies and 70W for the highs
- Flat response from 55 Hz to 20 kHz
- Extremely wide sweet spot and good imaging
- Built-in speaker response controls
- 6 1/4" Woofer, 1" silk-dome tweeter
- Built-in adjustable high match, low match
- Room Compensation
- Magnetically shielded
- Overload protection
- Front bi-color (On/Clip) indicator
- XLR and 1/4" inputs
- High grade MDF wooden cabinet

## P8A

320W 2-Way High Resolution Active Speaker

- Bi-amplified design with 212W for the low frequencies and 106W for the highs
- Flat response from 45 Hz to 22 kHz
- Extremely wide sweet spot and good imaging
- Built-in speaker response controls
- 8 3/4" Woofer, 1" silk-dome tweeter
- Built-in adjustable high match, low match
- Room compensation circuitry
- Strong bass
- Magnetically shielded
- Overload protection
- Front bi-color (On/Clip) indicator
- XLR and 1/4" inputs
- High grade MDF wooden cabinet

# SOUND AMBASSADOR



331 x 230 x 244 mm ( 13" x 9" x 9.6")  
7 kg (15 lbs)

## SOUND AMBASSADOR 35 DELUXE

35 Watt Mobile Sound System

- All-in-one compact mobile wireless sound system
- 6.5" full range speaker and 35 watts power amplifier built-in
- Optional UHF or Infrared wireless microphones
- Optional CD player with anti-shock or MP3 Player/Recorder with Built-In Memory and SD Card Slot
- Built-in DC charging circuit
- 12 VDC supply from built-in, maintenance-free lead acid type rechargeable batteries, 2.7Ah
- DC inlet for external power supply
- Slot for choice of two UHF PLL synthesized diversity or Infrared wireless receiver modules
- Built-in diversity receiving antennas
- One 1/4" phone jack for wired microphone input
- 1/4" phone jack jacks for line-level input and output
- Built-in limiter and protection circuitry to minimize distortion and overload
- Individual volume control for wired and wireless microphones
- Echo effect with level and time/repeat controls
- 25mm diameter tripod stand adapter included
- Compatible with the Phonic S3 tripod speaker stand



This picture is for reference only and features optional components.  
Your Sound Ambassador 75 Deluxe may differ to what is shown here.

612 x 300 x 350 mm ( 24" x 11.8" x 13.8")  
19.5 kg (43 lbs)

## SOUND AMBASSADOR 75 DELUXE

75 Watt Mobile Sound System

- Portable sound system with wheels and retractable handle
- Optional wireless microphones (UHF), anti-shock CD player with MP3 playback, and MP3 Player/Recorder with built-in memory and SD card slot
- 100 - 240VAC switching power supply
- 10" 2-way speaker system (75 Watts @ 4 ohms)
- Built-in DC charging circuit
- 24 VDC supply from two built-in, maintenance-free lead acid type rechargeable batteries
- One XLR and one 1/4" phone jack for wired microphone input
- 1/4" phone jack and mini-stereo jacks for line-level input and output
- Built-in limiter and protection circuitry to minimize distortion and overload
- Individual volume control for wired and wireless microphones
- Master volume control
- Switched and unswitched speaker output jacks
- Tripod stand adapter included
- Compatible with the Phonic S1 and S2 speaker mounts

### Optional Accessories:

- UM30: Wireless UHF Handheld Microphone System
- UM40: Wireless UHF Lavalier Microphone System
- UM50: Wireless UHF Headset Microphone System
- CD Player with MP3 Playback
- MP3 Player/Recorder with Built-In Memory and SD Card Slot

For more information, see page 28 and 29.

## SOUND AMBASSADOR 40A

Active Expansion Speaker for the Sound Ambassador 35 Deluxe

- 6.5" full range speaker and 35 watt power amp built-in
- 2.7Ah acid-lead battery built-in, operates on DC or AC power
- Echo effect and tone control for sweetening your voice
- 25mm diameter tripod stand adapter included
- Speaker output jack for external passive speaker (Sound Ambassador 40P)

## SOUND AMBASSADOR 40P

Passive Expansion Speaker for the Sound Ambassador 35 Deluxe

- Passive speaker for the extension of SA35D
- 6.5" full range speaker and 35 watts program power handling
- Sensitivity 92dB SPL @1W/1M
- 25mm diameter tripod stand adapter included

## SOUND AMBASSADOR 80A

Active Expansion Speaker for the Sound Ambassador 75 Deluxe

- 10" 2-way speaker system with 75 watt power amplifier
- Frequency response: 50Hz to 18kHz
- 100-240VAC switching power supply
- Built-in DC charging circuit
- 24 VDC supply from two built-in, maintenance-free lead acid type rechargeable batteries
- 24-32VDC inlet for external power supply
- Two 1/4" phone jacks for input & output
- Built-in limiter and protection circuitry to minimize distortion and overload
- Tripod stand adapter included

## SOUND AMBASSADOR 80P

Passive Expansion Speaker for the Sound Ambassador 75 Deluxe

- 10" 2-way speaker system
- Power handling: 75 watts
- Frequency response: 50Hz to 18kHz
- Sensitivity: 96dB SPL @ 1m
- Two 1/4" phone jack for input & output
- Tripod stand adapter included

\* See Appendix V on page 33 for full specifications

# ROADGEAR SERIES

The RoadGear Series is a totally hassle-free, mobile sound solution. The RoadGear 160 Plus and 260 Plus are self-sufficient systems housing 2-way 8" speakers, a 5- or 8-channel powered mixer, a dynamic microphone (two with the 260) and all the necessary cables. The road-worthy, high-impact modular polymer construction in a wheelbase, luggage-style cabinet makes RoadGear the ideal mobile sound solution for live performers, schools, churches, conferences, special events, and anywhere that calls for a quick, five minute setup.

## ROADGEAR 160 **PLUS**

160 Watt Mobile Sound System

- Luxury luggage-style molded cabinet with wheels
- 160W (80W per channel) stereo power amplifier
- 5-Channel powered mixer (three Mic/Line, one stereo) with phantom power
- Speaker system with 1" compression driver and 8" woofers
- Echo effect with delay and repeat controls
- 2-band EQ on each input channel
- System bass/treble control
- One stereo input channel and one stereo AUX return
- Speaker output with send and return
- One dynamic microphone with mic clip, cable and carry bag
- Two 30 ft speaker cables
- Storage compartments for microphones, cables and accessories
- Operates on AC or DC power

## ROADGEAR 260 **PLUS**

260 Watt Mobile Sound System

- Luxury luggage-style molded cabinet with wheels
- 260W (130W per channel) stereo power amplifier
- 8-Channel powered mixer (four Mic/Line, two stereo) with phantom power
- Speaker system with 1" compression driver and 8"woofer
- DFX, our 24-bit digital multi-effect processor with 16 programs and foot switch jack
- 2-band EQ on each input channel
- 3-band system equalizer
- One stereo input channel and one stereo AUX return
- Speaker output with send and return
- Two dynamic microphones with mic clips, cables and carry bags
- Two 30 ft speaker cables
- Storage compartments for microphones, cables and accessories
- Operates on AC or DC power

### Optional Accessories:

- Wireless UHF handheld, lavalier and head-set microphones (UM31, UM41, UM51, respectively)
- Speaker stands and mounts (MK1-RG, MK2-RG, SK1, SK2)
- RoadGear travel bag (TB-RG)
- Portable battery pack (BP-RG)
- DC power converter (CV-RG)

For more information, see page 28 and 29.

818 x 635 x 352 mm ( 32.2" x 25" x 13.86")  
28 kg ( 62 lbs)



	RoadGear 160 plus	RoadGear 260 plus	
Speakers	8"		Woofer
	1" Driver		Tweeter
Output Power	80W + 80W	130W + 130W	8Ω
Low/High Crossover Point	2 kHz		
Inputs	3	4	XLR
	3	4	1/4"
	2	3	1/4" Stereo
	1	1	Stereo RCA
Speaker Outputs	2	4	1/4"
System EQ	Treble or Bass	3-band	
Minimum Impedance (Power Amp)	8Ω	4Ω	
Amp Mode	L & R or MAIN & MONITOR		
DFX	Echo	16 & Tap Delay	
Phantom Power	-	√	
Wireless microphone expansion slots	2	2	
Included Accessories	1	2	Mic
	√	√	Cables & Dust Cover



# WIRELESS

For use with Nexus Speakers

## WM-SYS1

Single Channel Wireless Kit for the Phonic Nexus Speakers

- WM60: single channel transmitter
- WM40-L receiver module

For Nexus Active Speakers, see page 22

## WM-SYS2

Dual Channel Wireless Kit for the Phonic Nexus Speakers

- WM70 dual channel transmitter
- WM40-L left channel receiver module
- WM40-R right channel receiver module

### Universal System For All Active Speakers

## WM-SYS3

Single Channel Wireless System For Active Speakers

- WM60 single channel transmitter
- WM400-L receiver
- M6, M8, M10 screws & velcro strip for attaching to speakers

## WM-SYS4

Dual Channel Wireless System For Active Speakers

- WM70 dual channel transmitter
- WM400-L left channel receiver
- WM400-R right channel receiver
- M6, M8, M10 screws & velcro strip for attaching to speakers

### Transmitters



## WM60

- Single Channel Wireless Transmitter
- 16 selectable UHF preset channels
- XLR and 1/4" phone jack inputs
- Transmits over 70 meters (230 feet)



## WM70

- Dual Channel Wireless Transmitter
- 16 selectable UHF preset channels
- Volume controls to avoid clipping
- Combo inputs accepting 1/4" and XLR Mono/Stereo select switch
- Transmits over 70 meters (230 feet)

## W3

WiFi Audio Receiver for the Sound Ambassador

- Fits perfectly into the Sound Ambassador wireless microphone slot
- Wirelessly receive any stereo signal from your PC
- Link Distance: 100m
- Audio Quality: 16bit, 32 / 44.1 / 48khz
- THD+N/ SNR: -90dB/ 95dB



### Receivers



## WM40-L WM40-R

- Single Channel Receiver
- For use with the Phonic Nexus Active Speakers
- 16 selectable UHF preset channels
- For use with the Phonic Nexus Active Speakers



## WM400-L WM400-R

- Single Channel Receiver For use with any active speaker
- 16 selectable UHF preset channels
- XLR output
- For use with any active speaker

## W5

2.4GHz Wireless Digital Audio System

- High quality audio achieved through 2.4GHz uncompressed PCM transmission
- Input/output achieved through a variety of connections (RCA, USB, S/PDIF)
- Receiver output: RCA out x 1; SPDIF Digital Optical out x 1
- Transmitter input: RCA in x 1; USB 2.0 in x 1
- 1100mAH Li-ion battery embedded into transmitter Box: easy to link MP3 or portable audio device
- Support multiport link: One transmitter can link with up to 5 receivers
- Easy system link between receiver and transmitter
- Bit rate/modulation: 11Mbps/ DSSS
- Link Distance: 100m
- Battery life: maximal 4 hr (Transmitter only)
- DC in +5V 1A
- Audio Quality: 16bit, 32/ 44.1/ 48khz
- THD+N/ SNR: -90dB/ 95dB
- USB 2.0 supported



# MICROPHONES

Now Phonic provides users with a complete wireless microphone range compatible with their most popular ranges of pro audio gear. The UM30, UM40 and UM50 Wireless Microphone sets are all compatible with the incredibly popular Sound Ambassador Mobile Sound Systems. The UM31, UM41 and UM51, on the other hand, are compatible with the popular RoadGear sets, Active Wireless Nexus Speakers and Powerpod 865 Plus and 885 Plus Molded Powered Mixers, making them incredible versatile as well as simple to use.

**Sound Ambassador**



For Sound Ambassador, see page 26



UM-R10



HT-100

## UM30

Wireless UHF Handheld System

- HT-100 Handheld Transmitter
- UM-R10 Wireless Receiver Module



BT-200



ML-10



UM-R10

## UM40

Wireless UHF Lavalier System

- BT-200 Bodypack Transmitter
- ML-10 Lavalier Mic
- UM-R10 Wireless Receiver Module



BT-200

MH-20



UM-R10

## UM50

Wireless UHF Head-set System

- BT-200 Bodypack Transmitter
- MH-20 Headset Mic
- UM-R10 Wireless Receiver Module

**Powerpod 865 Plus  
Powerpod 885 Plus**



**RoadGear**



**Nexus**



For RoadGear, see page 27  
For Nexus, see page 22



HT-100



UM-R11

## UM31

Wireless UHF Handheld System

- HT-100 Handheld Transmitter
- UM-R11 Wireless Receiver Module



BT-200



ML-10



UM-R11

## UM41

Wireless UHF Lavalier System

- BT-200 Bodypack Transmitter
- ML-10 Lavalier Mic
- UM-R11 Wireless Receiver Module



BT-200

MH-20



UM-R11

## UM51

Wireless UHF Head-set System

- BT-200 Bodypack Transmitter
- MH-20 Headset Mic
- UM-R11 Wireless Receiver Module

# SIGNAL PROCESSORS



## GEQ1500

482 x 183 x 44 mm  
(19" x 7.2" x 1.7")  
2.29 kg (5.05 lbs)



## GEQ3100

482 x 183 x 88 mm  
(19" x 7.2" x 3.6")  
4.4 kg (9.7 lbs)



## DFX256

483 x 44 x 107 mm  
(19" x 1.75" x 4.2")  
1.2 kg (2.64 lbs)



## DYN2000

482 x 183 x 44 mm  
(19" x 7.2" x 1.7")  
2.29 kg (5.05 lbs)



## iA231F

485.5 x 88 x 182 mm  
(19" x 3.5" x 7.2")  
3.2 kg (7.1 lbs)

## GEQ1500

15-band Graphic Equalizer

- Two 15-band, 2/3-octave Constant Q frequency bands
- Switchable boost/cut ranges of  $\pm 6$  or  $\pm 12$  dB
- 12 dB per octave 50Hz low-cut filter
- Front-panel bypass switch
- $\pm 12$  dB input gain range
- 4-segment LED ladders for monitoring output levels
- XLR and TRS Inputs and Outputs
- Internal Toroidal Transformer

## GEQ3100

31-band Graphic Equalizer

- Two 31-band, 1/3-octave Constant Q frequency bands
- Switchable boost/cut ranges of  $\pm 6$  or  $\pm 12$  dB
- 12 dB per octave 50Hz low-cut filter
- Front-panel bypass switch
- $\pm 12$  dB input gain range
- 4-segment LED ladders for monitoring output levels
- XLR and TRS Inputs and Outputs
- Internal Toroidal Transformer

## DFX256

Digital Effects Processor

- 256 digital effects with memory
- Programs include: reverb, delay, echo, flange and effect combinations
- 32/40-bit digital signal processing plus 24-bit A/D and D/A conversions
- Easy-to-read 2-digit LED display
- Auto-bypass when power is off
- Foot switch jack allows user to turn the effect on or off
- Bi-color peak LEDs for easy input level-setting

## DYN2000

Dual Channel Compressor and Limiter

- Stereo or Dual Mono operation of gating, compression and peak limiting
- Expander/Gate Circuit with variable release time and +15dBu maximum threshold
- Hard Knee Selection allows selection between compression curve and the classic Hard Knee curve
- Low Frequency Shelf (via Contour button) in the Sidechain Path function
- Limiting - provides control of maximum peak levels at output regardless of other controls
- Peak Limiter comes after the compression, gating and other circuitry including the output gain
- Absolute limit for peak excursions before they reach the output
- True RMS Level Detection senses the power in the program, in a similar way as human hearing does, giving results superior to peak or average detection
- Bypass Buttons on both channels - comparing the processed and unprocessed signals
- LED Display for Gain Reduction and output
- Balanced XLR and 1/4" TRS Input and Output Jacks
- Separate Sidechain Inserts enable an outboard processor or signal to control compression or gating

## iA231F

Dual Channel Digital 31-Band Graphic Equalizer

- 30 mm VR Sliders for precise adjustment
- Feedback Detection System instantly reveals critical frequencies
- Additional HPF filter removes unwanted frequencies
- Switchable boost/cut range between 6 dB and 12 dB
- EQ IN/OUT switch
- I/O Level meter switch
- Dedicated mono subwoofer output with adjustable crossover frequency
- +15 dB to -∞ input gain range for easy level matching
- 8-segment LED meter with clip warning for input
- Illuminated faders
- Relay-controlled bypass
- Channel-link function
- Balanced inputs and outputs with 1/4" TRS and XLR connectors
- Built-in limiter control from -20 dB to +20 dB (OFF)



### i7100

51.3 x 482 x 207.6 mm  
(2.02" x 18.98" x 8.17")  
2.2Kg (4.8lbs)



### i7300

51.3 x 482 x 207.6 mm  
(2.02" x 18.98" x 8.17")  
2.5 kg (5.5 lbs)



### i7600

483 x 44 x 206 mm  
(19" x 1.75" x 8")  
2.5 kg (5.5 lbs)



### PPC8000

44.44 x 48.2 x 152 mm  
(2.75" x 1.9" x 6")  
2.4kg (5.29 lbs)



### PPC9000

44.44 x 48.2 x 152 mm  
(2.75" x 1.9" x 6")  
2.4kg (5.29 lbs)



## i7100

Digital Feedback Eliminator

- 24 fully programmable parametric filters can be set manually
- Auto Mode constantly monitors the mix and automatically resets the filters
- Manual Mode provides each channel with up to 12 fully parametric filters
- Single-Shot, Auto, and Manual modes can be assigned to each individual filter
- Most recent changes are automatically stored and kept, even after the power is off

## PPC8000

Power Conditioner with Light Modules

- 8 switched outlets on the rear of the unit
- Single, unswitched outlet on the front
- Two swiveling light fixtures with dimmer switch for rack illumination
- RFI / EMI filtering
- Circuit Breaker with 15 amp rating
- Heavy-duty 14-gauge AC power cord
- Triple-mode Varistor spike and surge protection

## PPC9000

Power Conditioner with Light Modules

- 8 switched outlets on the rear of the unit
- Single, unswitched outlet on the front
- Two swiveling light fixtures with dimmer switch for rack illumination
- RFI / EMI filtering
- Circuit Breaker with 15 amp rating
- Heavy-duty 14-gauge AC power cord
- Triple-mode Varistor spike and surge protection
- 20-segment, line Voltage meter reading from 90 to 128 VAC

## i7300

Digital Multi Reverb

- 24-bit A/D and D/A converters with 256/512 times over sampling for high headroom and resolution
- Internal 32-bit processor with 44.1 kHz sampling rate
- True stereo performance and variable stereo image parameters
- 100 factory programs and 100 user programs
- Dual 10-segment LED level meters
- Balanced XLR and 1/4" TRS inputs and outputs
- Operating levels of +4 dBu and -10 dBV independently selectable for input and output
- Foot switch connector for hands-free program selection and bypass
- 4 MIDI capability allowing real-time program selection and dump
- Dedicated rotary controls and illuminated buttons for quick and easy operation
- Large LCD display

## i7600

Dual 30-Band 1/3 Octave Digital Graphic Equalizer with RTA

- Dual-channel 29-band real-time spectrum analyzer (RTA)
- 24-bit A/D and D/A converters with 256/512 times over sampling for high headroom and resolution
- Internal 32-bit/44.1 KHz processor
- Provides 12 dB of boost or cut
- Channel-link function
- Stores up to 60 programs: 30 factory-set, 30 user-defined
- Selectable unit of measurement for RTA line signal: dBu or dBV
- Six view range options for band-level measurement
- Six response time options
- Peak-hold options: permanent and none
- Three weighting options: A weighting, C weighting, and flat
- Pink noise generator outputs balanced test signals at 0 dB
- Bypass function
- Variable low-pass filter (LPF) and high-pass filter (HPF)
- Balanced XLR and 1/4" TRS inputs and outputs
- Operating levels of +4 dBu and -10 dBV independently selectable for input and output
- 780 bright LED indicators
- Rack mountable in one rack-space chassis

APPENDIX

Appendix I: Sonic Station Mixers

	Sonic Station 16	Sonic Station 22	Sonic Station 32	
Total Inputs	24	30	40	
	16	20	30	Mic
	16	18	28	Line
	4	6	6	Stereo*
	-	1	1	Talkback Mic
	√	-	-	Mini Stereo
	1	3	3	Stereo RCA
Outputs	5	12	12	1/4" TRS
	3	3	3	XLR
	8	18	28	Direct Outs
	√	-	-	Mini Stereo
	√	√	√	Stereo RCA
Inserts	√	√	√	
Channel EQ	3 -band with swept mid			
Level Meter	2 x 12-pt	7 x 12-pt		
DFX	One 16-EFX	Dual DFX		
Lamp Jack	BNC			
Dimensions (H x W x D)	440 x 210 x 475 mm ( 17.3" x 8.26" x 18.7" )	859x102.79x547.42 mm ( 33.8" x 4.05" x 21.6" )	1155.5x102.79x547.42 mm ( 45.5" x 4.05" x 21.6" )	
Weight	9.5 kg ( 20.9 lbs )	15.5 kg ( 34.1 lbs )	18 kg ( 39.7 lbs )	

\*AUX inputs included

Appendix II: AM Mixers

	AM 120	AM 220	AM 240	AM 440	AM 240D	AM 440D	AM 442D	AM 642D	AM 844D	
Total Inputs	5	8	10	12	10	12	17	18	24	
	1	2	2	4	2	4	4	6	8	Mic
	1	2	2	4	2	4	5	6	8	Line
	2	2	4	4	4	4	6	6	8	Stereo*
Outputs	3	5	5	5	5	5	9	10	15	1/4" TRS
							2	2	2	XLR
	√	√	√	√	√	√	√	√	√	Stereo RCA
Channel EQ	2-band	3-band					3-band with swept MID			
Level Meter	2 x 4-pt						2 x 12-pt			
DFX	-	-	-	-	100 + Tap delay					
Dimensions (W x H x D)	156 x 51 x 244 mm (6.2"x 2" x 9.6" )	190 x 56 x 233 mm (7.5"x2.2" x 9.2" )	190 x 56 x 233 mm (7.5"x2.2" x 9.2" )	242 x 55 x 255 mm (9.5"x2.2" x 8.9" )	190 x 56 x 233 mm (7.5"x2.2" x 9.2" )	242 x 55 x 255 mm (9.5"x2.2" x 8.9" )	300 x 89 x 340 mm (11.8"x3.5" x 13.3" )	407 x 89 x 357 mm (16"x3.5" x 14" )	418 x 140 x 438 mm (16.5"x5.5" x 17.2" )	
Weight	1.1 kg (2.4 lbs)	1.5 kg (3.3 lbs)	1.5 kg (3.3 lbs)	1.7 kg (3.8 lbs)	1.5 kg (3.3 lbs)	1.7 kg (3.8 lbs)	4.2 kg (9.3 lbs)	4.8 kg (10.6 lbs)	5.9 kg (13 lbs)	

\*AUX inputs included

Appendix III: Studio Monitors

	P5A	P6A	P8A	
Connectors	1	1	1	XLR
	1	1	1	1/4" Phone Jack
Amplifier Low	140W	140W	212W	
Amplifier High	70W	70W	106W	
Woofers Size	5"	6 1/4"	8 3/4"	
Tweeter Size	1"	1"	1"	
Nominal Impedance	8 Ω			
Dimensions (H x W x D )	295 x 196 x 295 mm ( 11.6" x 7.7" x 11.6" )	351 x 221 x 300 mm ( 13.8" x 8.7" x 11.8" )	429 x 269 x 231 mm ( 16.9" x 10.6" x 9" )	
Net Weight	5.6 kg (12.9 lbs)	8.2 kg (18 lbs)	10 kg (22 lbs)	

## Appendix IV: Powerpod Mixers

	POWERPOD 410	POWERPOD 620 PLUS	POWERPOD 740 PLUS	POWERPOD 780 PLUS	POWERPOD 820	POWERPOD 1062 PLUS	
Inputs	4	6	7	7	8	10	Total
	4	4	7	7	4	9	Mic
	4	2	2	2	4	4	Line (Hi-Z)
	-	2	2	2	-	2	Line (Super Hi-Z)
	-	-	4	4	4	5	Stereo*
	√	√	√	√	√	√	Stereo RCA
Outputs	1	3	3	3	4	4	1/4" TRS
	√	√	√	√	√	√	Stereo RCA
Speaker Outputs	2	5	5	5	4	5	1/4" Phone Jack
Power Amplifier	100W + 100W	100W + 100W	220W + 220W	300W + 300W	100W + 100W	375W + 375W	4Ω stereo
	-	200W	440W	600W	-	750W	8Ω bridge
Channel EQ	2-band		3-band				
System EQ	-	7-band stereo			-	2 x 8 band	
Level Meter	-	2 x 5-pt			2 x 10-pt	5-pt	
DFX	Variable Digital Delay	100+			16	100+	
Weight	7.4 kg	12 kg	15.5 kg	15.5 kg	3.2 kg	21.5 kg	

\*AUX inputs included

	POWERPOD 1860 PLUS	POWERPOD K-12 PLUS	POWERPOD K-16 PLUS	POWERPOD 865 PLUS	POWERPOD 885 PLUS	
Total Inputs	16	16	20	12	12	Total
	10	10	12	8	8	Mic
	8	8	12	6	6	Line
	4	4	4	6	6	Stereo*
	2	2	2	√	√	Stereo RCA
Outputs	6	10	10	7	7	1/4" TRS
	√	√	√	√	√	Stereo RCA
Speaker Outputs	4	4	4	5	5	Speakon
	2	2	2	2	2	1/4" Phone Jack
Power Amplifier	400W + 400W	500W + 500W	500W + 500W	300W + 300W	400W + 400W	4Ω stereo
	800W	1000W	1000W	600W	800W	8Ω bridge
Wireless Module Slot				√	√	
Vocal Elimination			√	√	√	
Feedback Detection		√	√	√	√	
sPs	-	-	√	√	√	
Channel EQ	3-band	3-band, with swept mids		3-band		
System EQ	7-band stereo					
Level Meter	2 x 13-pt			3 x 5-pt		
DFX	100+	2 x 100+		100+		
Dimensions (HxWxD)	483x142.6x466.2 mm ( 19" x 5.6" x 18.4" )	583.2x142.6x466.2 mm ( 23" x5.6" x18.4" )	583.2x142.6x466.2 mm ( 23" x5.6" x18.4" )	475x306x324 mm ( 18.7" x12" x12.8" )	475x306x324 mm ( 18.7" x12" x12.8" )	
Weight	14.3 kg ( 31.5 lbs )	14.5 kg ( 31.94 lbs )	19.5 kg ( 42.95 lbs )	11 kg ( 24.2 lbs )	12 kg ( 26.4 lbs )	

\*AUX inputs included

## Appendix V: Sound Ambassador Series

	SA35D	SA75D	SA40A	SA40P	SA80A	SA80P	
Output RMS	35W	75W	35W	-	75W	-	
Power Handling (Program)	-	-	-	40W	-	150W	
Frequency Response	60 Hz - 18 kHz	50 Hz - 20 kHz	60 Hz - 18 kHz	60 Hz - 18 kHz	18 Hz - 20 kHz	50 Hz - 18 kHz	
Woofers	6.5"	10"	6.5"	6.5"	10"	10"	
Tweeter	1"	1"	1"	1"	1"	1"	
Inputs	√	2	√	√	√	√	1/4"
	√	√	-	-	-	-	XLR
	-	√	-	-	-	-	Mini-stereo
Outputs	√	√	√	√	√	√	Line Out
	-	2	-	-	√	-	Speaker Out
	-	√	-	-	-	-	Mini-stereo
Channel Tone Control	√	√	-	-	-	-	
Internal Battery	√	2	√	-	√	-	
Optional Accessories	√	√	-	-	-	-	Wireless Mic
	√	√	-	-	-	-	CD Player



## Appendix VI Center Series Speakers

	CENTER 10	CENTER 12(M)	CENTER 15	CENTER 215	CENTER 185B	CENTER 2155B	CENTER 2185B	
Power Handling (RMS)	200W	300W	400W	600W	500W	600W	800W	
Frequency Response (Hz)	60Hz - 20kHz	55Hz - 18kHz	50Hz - 18kHz	45Hz - 18kHz	35Hz - 200Hz	40Hz -250Hz	40Hz -350Hz	
Sensitivity: 1W/1M	93dB	95dB	96dB	98dB	95dB	96dB	100dB	
Nominal Impedance	8 ohm	8 ohm	8 ohm	4 ohm	8 ohm	4 ohm	4 ohm	
Maximum SPL	122dB	125dB	126dB	129dB	130dB	129dB	131dB	
Coverage H° x V°	90 x 50	90 x 50	80 x 50	90 x 60	-	-	-	
Crossover mode	Passive	Passive	Passive	Passive	-	-	-	
Connectors	2	2	2	2	2	2	2	Speakon
Handles	2	2 (12M only one)	2	2	2	2	4	Die-cast
Stand Socket (35mm)	Bottom	Bottom	Bottom	-	Top	-	-	
Dimensions (HxWxD) mm	520 x 330x 330	610 x 380 x 380 610 x 350 x 350 (12M)	740 x 450 x 450	1160 x 500 x 500	690 x 560 x 600	500 x 982 x 510	1080 x 574 x 780	

## Appendix VII XP Amplifiers

	XP 1000	XP 2000	XP 3000	XP 3100	XP 5000	XP 5100	
Continuous Power Output	560W + 560W	960W + 960W	1400W + 1400W	1400W + 1400W	2500W + 2500W	2500W + 2500W	2Ω stereo
	1120W	1920W	2800W	2800W	5000W	5000W	4Ω bridge
Inputs	√	√	√	√	√	√	XLR
	√	√	√	√	√	√	1/4"
	-	-	-	-	√	√	Barrier Strip
Outputs	√	√	√	√	√	√	Binding Posts
	√	√	√	√	√	√	Speakon®-type
	-	-	-	√	-	√	XLR
Subwoofer Output	-	-	-	√	-	√	
Frequency Response	20 Hz - 20 kHz, 0/-1 dB; -3 dB points: 5 Hz - 100 kHz						
Gain	40 x (32 dB)						
High Pass Filter (30Hz, 50Hz)	√	√	√	√	√	√	
Low Pass Filter (60Hz, 90Hz, 120Hz)	-	-	-	√	-	√	
Input Impedance	20 k Ω balanced, 10 k Ω unbalanced						
Damping Factor @ 8 ohm s	>2000	>500	>500	>500	>500	>500	
Size (rack space units)	2	3	3	3	3	3	
Weight	17.5 kg (38.5 lbs)	21.8 kg (48 lbs)	24.2 kg (53.3 lbs)	24.2 kg (53.3 lbs)	28.2 kg (62 lbs)	28.2 kg (62 lbs)	

## Appendix VIII MAX Amplifiers

	MAX 250	MAX 500	MAX 860 Plus	MAX 1500 Plus	MAX 2500 Plus	
Continuous Power Output	80W + 80W	120W +120W	300W + 300W	450W + 450W	750W + 750W	4Ω stereo
	60W + 60W	90W + 90W	200W + 200W	280W + 280W	500W + 500W	8Ω stereo
	-	-	600W	900W	1500W	8Ω bridge
Inputs	√	√	√	√	√	XLR
	√	√	√	√	√	1/4" Jacks
Outputs	-	-	√	√	√	Speakon®-type
	√	√	√	√	√	Binding Posts
Frequency Response	20 Hz - 20 kHz, +0/-1 dB					
Input Impedance	20 k Ω balanced, 10 k Ω unbalanced					
Protection	Short circuit, thermal, subsonic, RF protection, output DC offset, power on/off muting					
Gain	41 x (30 dB)	41 x (30 dB)	32 x (30 dB)	40 x (30 dB)	50 x (30 dB)	
Size (Rack Units)	1	1	2	2	2	
Net Weight	6.7kg (14.8 lbs)	7.85kg (17.3 lbs)	14.6 kg (32.2 lbs)	15.5 kg (34.2 lbs)	18 kg (39.7 lbs)	

## Appendix IX Nexus Series Speakers

	NEXUS A612	NEXUS A315	NEXUS A815	NEXUS A915SB	NEXUS A935SB	
Output RMS	225W + 50W	120W + 40W	320W + 80W	400W + 50W	250W + 100W x 2	
Frequency Response	65 Hz - 20 kHz	50 Hz - 20 kHz	50 Hz - 20 kHz	38 Hz - 150 Hz	38 Hz - 150 Hz	
Woofer	12"	15"	15"	15"	15"	
Tweeter	1"	1"	1"	-	-	
Inputs	√	√	√	-	√	XLR
	√	√	√	√	√	1/4" Phone Jacks
Output	√	√	√	√	√	XLR
	-	-	-	-	2 x Powered	1/4" Phone Jacks
Impedance	20k Ω balanced ; 10 k Ω unbalanced					
Sensitivity	50 - 0 dB on input					
Max SPL @ 1M	126 dB	123 dB	126 dB	98 dB	123 dB	
Net Weight	20.5 kg (45.2 lbs)	19.5 kg (43 lbs)	21.5 kg (47.4 lbs)	< 30 kg (66 lbs)	< 30 kg (66 lbs)	

## Appendix X Impression Plus Speakers

	IMPRESSION I2 Plus	IMPRESSION I5 Plus	IMPRESSION I5SB Plus	IMPRESSION I8SB Plus	
Power Handling	250W	300W	500W	700W	RMS
	500W	600W	1000W	1400W	Program
Woofer	12"	15"	15"	18"	
Tweeter	1 3/4"	1 3/4"	-	-	
Input Connectors	2	2	2	2	1/4" Phone Jacks
	2	2	2	2	Speakon
Sensitivity @ 1W / 1M	96 dB	97 dB	97 dB	99 dB	
Frequency Response	55 Hz - 20 kHz	48 Hz - 20 kHz	38 Hz - 250 Hz	33 Hz - 250 Hz	
Dispersion Angle	90 x 60°	90 x 60°	-	-	
Nominal Impedance	8Ω	8Ω	4Ω	4Ω	
Dimensions (H x W x D)	600 x 38 x 340 mm (23.6" x 15" x 13.4")	660 x 465 x 370 mm (26" x 18.3" x 14.6")	632 x 464 x 445 mm (24.9" x 18.3" x 13.2")	860 x 680 x 465 mm (33.9" x 26.8" x 18.3")	
Weight	16.2 kg (35.7 lbs)	19.7 kg (43.4 lbs)	26.5 kg (58.4 lbs)	45.2 kg (101 lbs)	

## Appendix XI SEM Speakers

	SEM710	SEM712	SEM715	SE725	SEM712A	SEM715A	
Power Capacity	80W	150W	200W	600W	-	-	Program
	160W	300W	400W	1200W	-	-	Peak
Built-in Amplifier	-		-	-	180W	180W	RMS
Woofer	10"	12"	15"	2 x 15"	12"	15"	
Tweeter	Piezo	Piezo	Piezo	Piezo	1"	1"	
Input Connectors	2	2	2	1	1	1	1/4" Phone Jacks
	-	-	-	-	1	1	XLR
Link Output Connectors	-	-	-	-	1	1	XLR
Sensitivity @ 1W / 1M	96 dB	95 dB	98 dB	100 dB	-	-	
Max SPL	-	-	-	-	120 dB	122 dB	
Frequency Response	65 Hz - 20 kHz	60 Hz - 20 kHz	50 Hz - 20 kHz	40 Hz - 20 kHz	60 Hz - 20 kHz	50 Hz - 20 kHz	
Built-in Crossover	√	√	√	√	√	√	
Dispersion Angle	90 x 40°	90 x 40°	90 x 40°	90 x 40°	90 x 40°	90 x 40°	
Nominal Impedance	8	8	8	4	-	-	
Dimensions (H x W x D)	491x351x341mm (19.3"x13.8"x13.4")	540x376x356mm (21.3"x14.8"x14")	679x476x388mm (26.7"x18.7"x15.3")	1085x476x388mm (42.7"x18.7"x15.3")	540x376x356mm (21.3"x14.8"x14")	679x476x388mm (26.7"x18.7"x15.3")	
Net Weight	11.2 kg (24.7 lbs)	13 kg (28.6 lbs)	18.4 kg (40.5 lbs)	32.5 kg (71.6 lbs)	16.5 kg (36.3 lbs)	22.3 kg (49.1 lbs)	

# INDEX

AM 120.....	11, Appendix II	PM801.....	9
AM 220.....	11, Appendix II	Powerpod 410.....	15, Appendix IV
AM 240.....	11, Appendix II	Powerpod 620 Plus.....	15, Appendix IV
AM 240D.....	12, Appendix II	Powerpod 740 Plus.....	15, Appendix IV
AM 440.....	11, Appendix II	Powerpod 780 Plus.....	16, Appendix IV
AM 440D.....	12, Appendix II	Powerpod 820.....	16, Appendix IV
AM 642D.....	12, Appendix II	Powerpod 865 Plus.....	16, Appendix IV
AM 844D.....	12, Appendix II	Powerpod 885 Plus.....	17, Appendix IV
Center 10.....	23, Appendix VI	Powerpod 1062 Plus.....	17, Appendix IV
Center 12.....	23, Appendix VI	Powerpod 1860 Plus.....	17, Appendix IV
Center 12M.....	23, Appendix VI	Powerpod K-12 Plus.....	18, Appendix IV
Center 15.....	23, Appendix VI	Powerpod K-16 Plus.....	18, Appendix IV
Center 215.....	23, Appendix VI	PPC 8000.....	31
Center 18SB.....	23, Appendix VI	PPC 9000.....	31
Center 215SB.....	23, Appendix VI	RoadGear 160 Plus.....	27
Center 218SB.....	23, Appendix VI	RoadGear 260 Plus.....	27
DYN2000.....	30	SE206.....	25
DFX256.....	30	SE207.....	25
Firefly 302 Plus.....	3	SEp206.....	25
Firefly 302 USB.....	3	SEp207.....	25
Firefly 404.....	3	SEM 710.....	24, Appendix XI
Firefly 808.....	2	SEM 712.....	24, Appendix XI
Firefly 808 Universal.....	2	SEM 715.....	24, Appendix XI
GEQ1500.....	30	Sonic Station 16.....	8, Appendix I
GEQ3100.....	30	Sonic Station 22.....	8, Appendix I
Helix Board 12 FireWire MKII.....	7	Sonic Station 32.....	8, Appendix I
Helix Board 18 FireWire MKII.....	7	Sound Ambassador 35 Deluxe.....	26, Appendix V
Helix Board 18 Universal.....	6	Sound Ambassador 75 Deluxe.....	26, Appendix V
Helix Board 24 FireWire MKII.....	7	Sound Ambassador 40A.....	26, Appendix V
Helix Board 24 Universal.....	6	Sound Ambassador 40P.....	26, Appendix V
i7100.....	31	Sound Ambassador 80A.....	26, Appendix V
i7300.....	31	Sound Ambassador 80P.....	26, Appendix V
i7600.....	31	Studio Wizard.....	4
iA231F.....	30	UM 30.....	29
ICON 300.....	19	UM 31.....	29
ICON 700.....	19	UM 40.....	29
Impact 8.4(X).....	10	UM 41.....	29
Impact 12.4(X).....	10	UM 50.....	29
Impact 16.4(X).....	10	UM 51.....	29
Impact 24.4(X).....	10	Versatap 30.....	25
Impression 12 Plus.....	24, Appendix X	Versatap 50.....	25
Impression 15 Plus.....	24, Appendix X	W3.....	28
Impression 15SB Plus.....	24, Appendix X	W5.....	28
Impression 18SB Plus.....	24, Appendix X	WM-40.....	28
KA920.....	18	WM-60.....	28
MAX 250.....	21, Appendix VIII	WM-70.....	28
MAX 500.....	21, Appendix VIII	WM-400.....	28
MAX 860 Plus.....	21, Appendix VIII	WM-SYS1.....	28
MAX 1500 Plus.....	21, Appendix VIII	WM-SYS2.....	28
MAX 2500 Plus.....	21, Appendix VIII	WM-SYS3.....	28
Nexus A315.....	22, Appendix IX	WM-SYS4.....	28
Nexus A612.....	22, Appendix IX	XP 1000.....	20, Appendix VII
Nexus A815.....	22, Appendix IX	XP 2000.....	20, Appendix VII
Nexus A915SB.....	22, Appendix IX	XP 3000.....	20, Appendix VII
Nexus A935SB.....	22, Appendix IX	XP 3100.....	20, Appendix VII
P5A.....	25, Appendix III	XP 5000.....	20, Appendix VII
P6A.....	25, Appendix III	XP 5100.....	20, Appendix VII
P8A.....	25, Appendix III	ZX2.....	9
PAA3.....	13	ZX4.....	9
PAA6.....	14		



## QUESTIONS ?

Email: [info@phonic.com](mailto:info@phonic.com)

## WANT TO BUY ?

Find a local Phonic reseller at <http://www.phonic.com/where/?ssolang=en>  
or email: [sales@phonic.com](mailto:sales@phonic.com)



**PHONIC**  
[WWW.PHONIC.COM](http://WWW.PHONIC.COM)

HOW FAR WILL YOUR MUSIC GO ?