

Safari 2000

- Wireless auto-scan
Up to two auto-scan wireless systems
- Input level control
2 channels on board mixer (XLR, TRS, TS, RCA)
- Priority features
Give access to features such as music ducking, voice priority feature
- Powered TS phone jack
Help adding up to two passive companion speakers
- RCA line outputs
RCA record out



- Player & recorder selection
Select between all-in-one CD/USB player and recorder (CD/USB) or USB player and recorder (USBR-1)
- Bluetooth-enabled audio streaming
Instantly stream music to the Safari 2000 from any cell smartphone or tablet with Bluetooth!
- DC power connector (12V - 15V)
- Echo reverb
Tone control and echo reverb effect
- Battery status indicator
Power, Charging and Battery Indicators
- Battery Power/Charging Switch
Battery protection switch preserves batteries during extended storage

Options and Accessories



Package Options

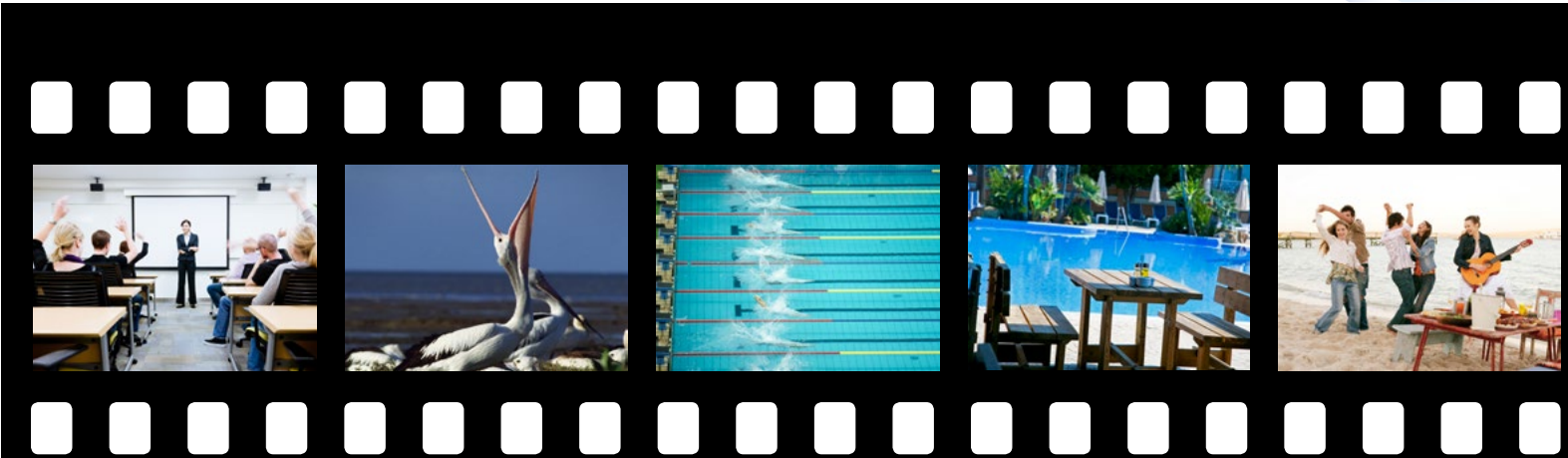
Safari 1000 Lite Includes: <ul style="list-style-type: none">▶ Safari 1000▶ Handheld microphone▶ Spiral cable	Safari 1000M Includes: <ul style="list-style-type: none">▶ Safari 1000M with USB Recorder▶ WM-1 handheld wireless microphone	Safari 1000D Includes: <ul style="list-style-type: none">▶ Safari 1000D with USB Recorder▶ Two WM-1 handheld wireless microphones
Safari 1500M Includes: <ul style="list-style-type: none">▶ Safari 1500▶ WM-1 handheld wireless mic▶ Carry bag with speaker opening	Safari 1500D Includes: <ul style="list-style-type: none">▶ Safari 1500▶ Two WM-1 handheld wireless mics▶ Carry bag with speaker opening	
Safari 2000 Base Includes: <ul style="list-style-type: none">▶ Safari 2000	Safari 2000 SYS1 Includes: <ul style="list-style-type: none">▶ Safari 2000▶ WM-1S handheld wireless system▶ CD/USB MP3 Player	Safari 2000 SYS2 Includes: <ul style="list-style-type: none">▶ Safari 2000▶ WM-1S handheld wireless system▶ USBR-1 USB MP3 Player and Recorder
Safari 3000 Base Includes: <ul style="list-style-type: none">▶ Safari 3000	Safari 3000 SYS1 Includes: <ul style="list-style-type: none">▶ Safari 3000▶ WM-1S handheld wireless system▶ CD/USB MP3 Player	Safari 3000 SYS2 Includes: <ul style="list-style-type: none">▶ Safari 3000▶ WM-1S handheld wireless system▶ USBR-1 USB MP3 Player and Recorder

Specifications

	SAFARI 1000	SAFARI 1500	SAFARI 2000	SAFARI 3000
Amplifier Technology	Class D	Class D	Class D x 2	Class D x 2
Power Output	50 Watt Peak 25 Watt RMS	60 Watt Peak 30 Watt RMS	200 Watt Peak 100 Watt RMS	320 Watt Peak 160 Watt RMS
Power Technology	Switching	Switching	Switching	Switching
Woofer	5" Full Range	5" Woofer	Custom 8"	Custom 10"
Tweeter	-	2 x 1"	1"	1" Titanium Compression Horn
Frequency Response	50 Hz - 18 kHz	50 Hz - 18 kHz	50 Hz - 18kHz	50 Hz - 20 kHz
EQ	-	Rotary EQ Control	Rotary EQ Control	Rotary EQ Control
EFX	-	Echo Reverb	Echo Reverb	Echo Reverb
Input	1/4" TRS and mini-stereo	2 Channel Mixer: Combo, RCA, 1/4" TRS	2 Channel Mixer: Combo, RCA, 1/4" TRS	3 Channel Mixer: 2 x combo, RCA, mini-stereo
Output	Mini-stereo -	RCA mono 1/4" TRS Powered Out	RCA mono 1/4" TRS Powered Out	RCA mono Speakon Powered Out
Battery Indicator	4-phase LED	Charge / Battery LEDs	Charge / Battery LEDs	4-phase LED
Crossover	No	Precisely Tuned	Precisely Tuned	2nd Order L-R
Ducking/Voice Priority	No	No	Yes	Yes
Wheeled	No	No	No	Yes
Body Material	Molded Polymer	Molded Polymer	Molded Polymer	Molded Polymer Internal bracing system
Accessories	Safari 1000M includes Wireless Receiver and USB Recorder/Player	Safari 1500M/D include Wireless Receiver and USB Recorder/Player	Wireless microphones, Wireless Reciever, CD/MP3/Recorder	Wireless microphones, Wireless Reciever, CD/MP3/Recorder, softcase
Wireless Microphone	With autoscans, RF remote volume control	With autoscans, RF remote volume control	With autoscans, RF remote volume control	With autoscans, RF remote volume control
Battery Spec	Lithium 14.8V 2.6AH	2 x Lithium 14.8V 2.6AH	Lead Acid 12V 7.2aH	Lead Acid
Battery Operation Time	8 hours at 80% output	8 hours at 80% output	8 to 10 hours run time	8 hours run time / fast charge, Battery protection switch
Grille Thickness	1.3 mm	1.3 mm	1.3 mm	1.3 mm
Mic Storage Compartment	None	Yes	Yes, dual	Yes, dual
Dimensions (HxWxD)	170 x 156 x 280 mm (6.7" x 5.5" x 11")	TBA	418 x 292 x 252 mm (16.5" x 11.5" x 9.9")	552 x 350 x 332 mm (21.7" x 13.8" x 13.1")
Weight	1.9 kg (4.1 lbs)	TBA	9.5 kg (21 lbs)	16 kg (35 lbs)

Phonic Corporation

WWW.PHONIC.COM
Design & Marketing Quality Professional Audio Products



Safari 1000 50 Watt
Safari 1500 60 Watt

The Safari series is Phonic's latest all-in-one, battery-powered sound solution. Powered by advanced class D amplifiers that deliver commanding power, the Safari sound systems can reach crowds of 1000+ people. Incredibly light-weight, the Safari systems are designed for excellent portability. From the compact Safari 1000 to the robust Safari 3000, each unit is designed with mobility in mind.

The Safari's rugged polymer body, rounded corners, and internal bracing system maximize structural strength, allowing the Safari to withstand heavy use. The Safari's electronic circuitry, including the amplifier, battery, and power supply are state-of-the-art. The efficient battery system can operate up to 10 hours (depending on the model) on a full charge and the quick recharge circuitry recharges in less than 8 hours. The onboard mixers have versatile input options, including XLR, TRS, mini stereo, and RCA.

Sound expansion is especially easy with the Safari. Up to two passive companion speakers can be added on most units through powered speaker output jacks. Finally, options such as Phonic's auto-scan wireless microphones, CD/USB player & recorder, and USB recorder give users the flexibility to customize the Safari into a perfectly tailored solution. So whether you are a street vendor, a musician, a teacher, or a business professional, the rugged, versatile, and powerful Safari is your ultimate portable system.

Safari 1000M / D / Lite
50 Watt Portable PA System

- Powerful 50 Watt (peak) output for loud, clear sound
- Elegant contour design and best-in-class performance
- Ultra compact, feather light & ergonomically portable
- 3.5mm line input accepts an external MP3, iPod or CD player
- Built-in alarm/siren for warning of threats, as well as paging lead
- 2 power modes: AC & built-in lithium rechargeable battery
- 4-level battery meter (25/50/75/100%) for accurate reading
- Use of shoulder strap or optional microphone stand
- 8 hours of operation with fast charge system

Safari 1000M / Safari 1000D Exclusive features:

- Built-in wireless receiver with 16 frequency channels
- One-touch Scan/ACT sync button for easy channel set-up
- Two wireless mics on "D" set, one wireless on "M"
- USB music player/recorder with LCD screen

Safari 2000

200 Watt 8" Portable PA System with 2-Channel Mixer

- Ultra-durable & lightweight (10kg) all-in-one battery powered sound solution
- 200 Watt Class D amplifier technology
- Impact resistant polymer enclosure with internal bracings
- 8" and 1" coaxially mounted tweeter
- Flat frequency response between 50Hz - 18kHz
- 2-Channel onboard Mixer: A combo jacks (XLR & ¼"), RCA and TS
- Add up to two passive companion speakers with the powered 1/4" TS phone jack
- 8 hours of operation on fully charged batteries
- Battery protection circuitry protects batteries during storage
- Rotary EQ control and echo reverb effects
- "Voice-priority" music ducking feature
- Integrated microphone storage slots
- All-in-one CD player and MP3 player/recorder (optional)

Safari 2000 200 Watt
Safari 3000 320 Watt

Advanced Electronics. Advanced Reliability

Phonic engineers designed the Safari for maximum reliability and durability. As of the launch date, the Safari's power supply, amplifier, and battery circuitries have endured over 1000 hours of real world and lab tests, guaranteeing a remarkable level of reliability. From heated ovens, freezing subzero rooms, high humidity chambers, rigorous drop tests, to electrical voltage spikes, the Safari has seen it all.

Auto-Scan Wireless Microphone Technology

The Safari's new auto scan wireless system is a model of simplicity. Upon a click of a button, the Safari automatically detects optimal transmission frequency and simultaneously synchronizes the transmitter and receiver. This automatic process takes less than 6 seconds to complete. Meanwhile, proprietary hardware and software noise rejection systems work in tandem to ensure that the signal, once established, is clean. Wireless reach of the Safari is also increased to more than 40 meters line-of-sight (131 feet). For optimal sensitivity and sound quality, all Safari wireless microphones are fitted with neodymium cartridges. Customize the Safari with the handheld, the headset, or lavalier wireless microphone systems and expect fantastic sound, fantastic simplicity.

Safari 1500M / D

60 Watt Portable PA System with 2 Channel Mixer

- Powerful 60 Watt (peak) output for loud, clear sound
- Elegant contour design and best-in-class performance
- Ultra compact, feather light & ergonomically portable
- Built-in wireless receiver with 16 frequency channels
- One-touch Scan/ACT sync button for easy channel set-up
- Two wireless mics on "D" set, one wireless on "M"
- USB music player/recorder with LCD screen
- 2-Channel onboard Mixer: A combo jacks (XLR & ¼"), RCA and TS
- Battery protection circuitry protects batteries during storage
- Rotary EQ control and echo reverb effects
- Powered output connector for extended operation
- 8 hours of operation with fast charge system
- Integrated microphone storage slot

Safari 3000

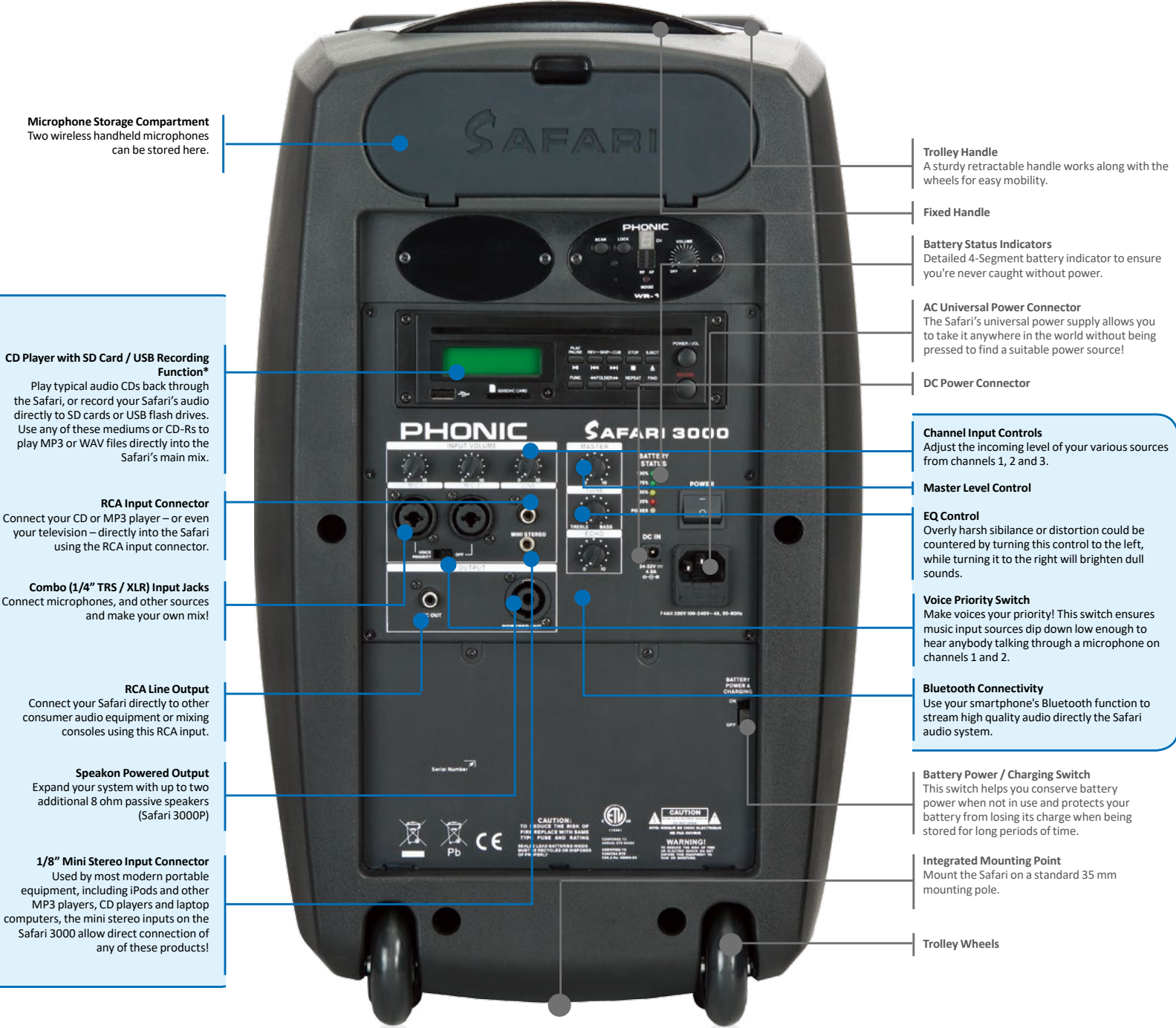
320 Watt 10" Portable PA System with 3-Channel Mixer

- Fully self-contained all-in-one portable audio system
- Slick molded speaker cabinet with handle and wheels for easy mobility
- 320 Watts (peak) of power through quality class D amplification
- 2-way output through 10" long-throw woofer matched with a pure-titanium compression driver
- Two mono 1/4" & XLR combo inputs, plus a stereo input with 1/8" and RCA connectors
- 2-track RCA outputs for connecting to external devices
- Connect additional passive speakers via Speakon speaker output with 80W output
- Onboard tone control for altering high- and low-frequency audio
- Maximum SPL of 120dB reaches large crowds
- Built-in battery with 4-stage status monitoring
- Optional anti-shock CD player with MP3 playback and USB port
- Two expansion slots for optional wireless microphone systems

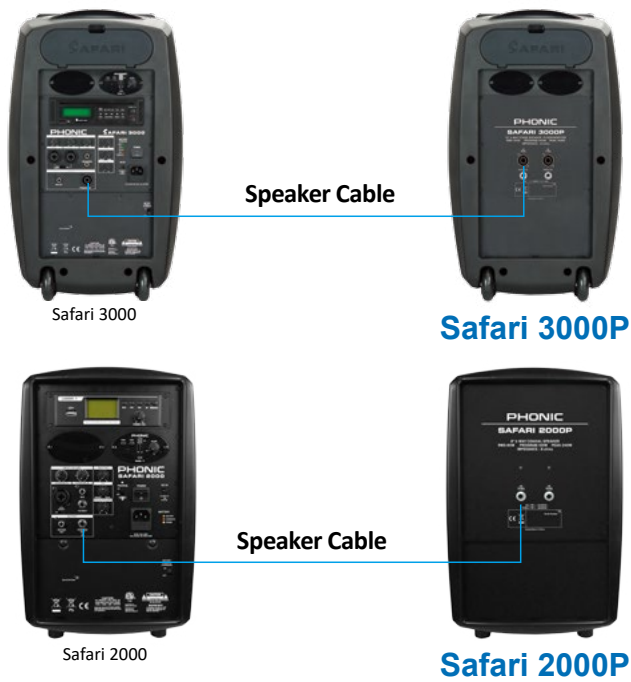
Safari 1000M / D



Safari 3000



Passve Expansion Speakers



WIRELESS MICROPHONES

Phonic engineered a state-of-the-art wireless microphone system for the Safari. The new system automatically scans the environment and fetches the optimal wireless frequency for static free transmission. Proprietary hardware and software noise suppressant technologies further ensure crystal clear sound. Safari wireless systems come in three varieties: Handheld, lavalier, and headset.

Wireless Transmitter Specifications

	WM-1 (Handheld Transmitter)	WB-1 (Beltpack Transmitter)
Frequency Range (Region Dependent)	500-875MHz (Selectable)	500-875MHz (Selectable)
Housing Material	ABS	ABS
Bandwidth	25MHz	25MHz
Spurious Emissions	<-55dBc	<-55dBc
Max. Deviation Range	±68KHz	±68KHz
Maximum Input Level	148dB SPL	148dB SPL
Battery	AA×2 Alkaline, >12hr battery life	AA×2 Alkaline, >12hr battery life
Notes	Please work with your sales representative to select the optimal frequency for your region	

Wireless Reciever Specifications

WR-1 / WR-2 (Wireless Recievers)	
Frequency Range (Selectable)	500-875MHz (Selectable)
Oscillation Mode	PLL synthesized
Bandwidth	25MHz
Preset Channels	16 Non-interference channels
Receiving Mode	CPU-controlled diversity technology
Squelch Control	Optimized automatic squelch control
Display	Channel display LED, 4 LED RF display, 4 LED AF display
Sensitivity	6dBµV, at S/N>80dB
Max. Deviation Range	±68KHz
Spurious Emissions	<80dB
Frequency Response	50Hz to 16KHz
S/N Ratio	>100dBA
T.H.D.	<0.5% @ 1KHz (Dev.=40KHz)
AF Output	300mV rms
Power	DC 12 to 15V
Current Consumption	<190 mA
Working Temperature	-10 to 60°C / 14 to 140°F
Notes	Please work with your sales representative to select the optimal frequency for your region