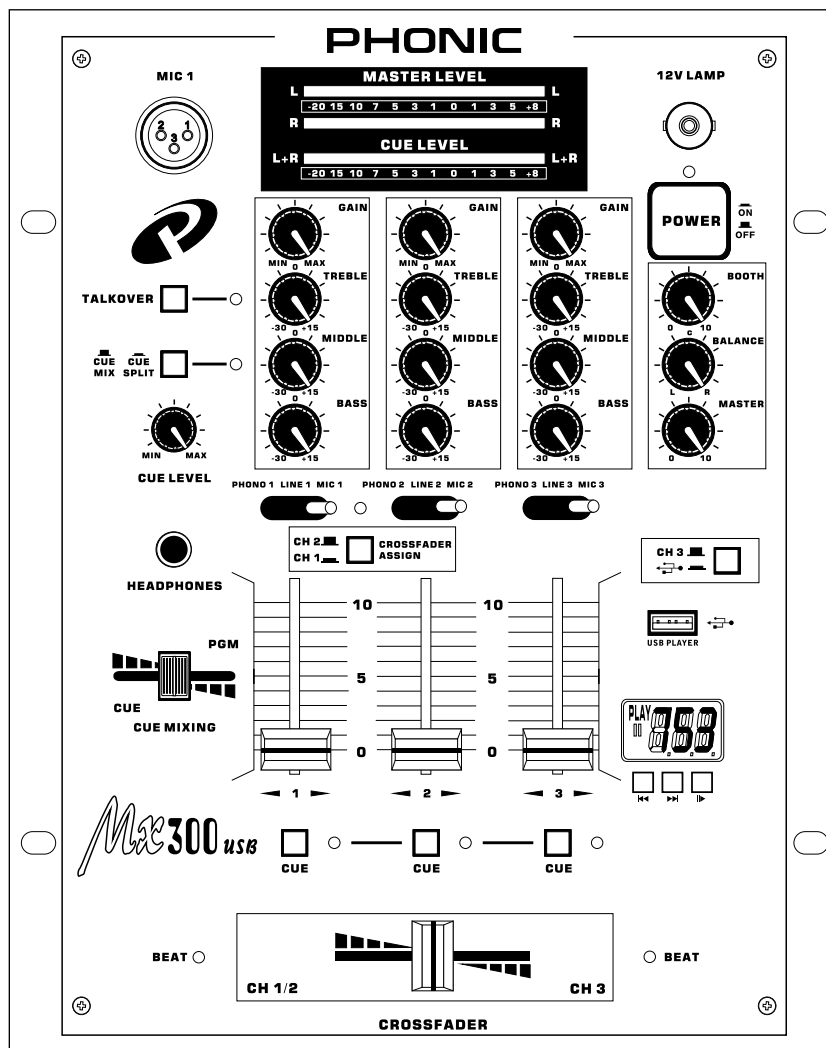


PHONIC



WWW.PHONIC.COM

English Deutsch Español Français Português 日本語 简体中文

MX300USB

- User's Manual
- Benutzerhandbuch
- Manual del Usuario
- Mode d'emploi
- Manual do Usuário
- 取扱説明書
- 使用手冊

English

Deutsch

Español

Français

Português

日本語

简体中文

MX300 USB

DJ MIXER WITH USB PLAYER



ENGLISH.....|

USER'S MANUAL

CONTENTS

INTRODUCTION.....	1
FEATURES.....	1
GETTING STARTED.....	1
FRONT PANEL.....	3
BACK PANEL.....	4
SPECIFICATIONS.....	5
APPENDIX	
APPLICATION.....	1
DIMENSIONS.....	2
BLOCK DIAGRAM.....	3

Phonic preserves the right to improve or alter any information within this document without prior notice

English

Deutsch

Español

Français

Português

日本語

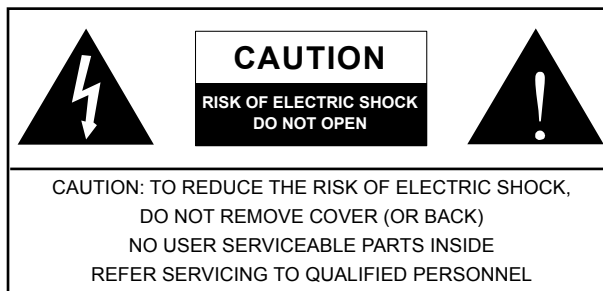
简体中文

IMPORTANT SAFETY INSTRUCTIONS

The apparatus shall not be exposed to dripping or splashing and that no objects filled with liquids, such as vases, shall be placed on the apparatus. The MAINS plug is used as the disconnect device, the disconnect device shall remain readily operable.

Warning: the user shall not place this apparatus in the confined area during the operation so that the mains switch can be easily accessible.

1. Read these instructions before operating this apparatus.
2. Keep these instructions for future reference.
3. Heed all warnings to ensure safe operation.
4. Follow all instructions provided in this document.
5. Do not use this apparatus near water or in locations where condensation may occur.
6. Clean only with dry cloth. Do not use aerosol or liquid cleaners. Unplug this apparatus before cleaning.
7. Do not block any of the ventilation openings. Install in accordance with the manufacturer's instructions.
8. Do not install near any heat sources such as radiators, heat registers, stoves, or other apparatus (including amplifiers) that produce heat.
9. Do not defeat the safety purpose of the polarized or grounding-type plug. A polarized plug has two blades with one wider than the other. A grounding type plug has two blades and a third grounding prong. The wide blade or the third prong is provided for your safety. If the provided plug does not fit into your outlet, consult an electrician for replacement of the obsolete outlet.
10. Protect the power cord from being walked on or pinched particularly at plug, convenience receptacles, and the point where they exit from the apparatus.
11. Only use attachments/accessories specified by the manufacturer.
12. Use only with a cart, stand, tripod, bracket, or table specified by the manufacturer, or sold with the apparatus. When a cart is used, use caution when moving the cart/apparatus combination to avoid injury from tip-over.
13. Unplug this apparatus during lightning storms or when unused for long periods of time.
14. Refer all servicing to qualified service personnel. Servicing is required when the apparatus has been damaged in any way, such as power-supply cord or plug is damaged, liquid has been spilled or objects have fallen into the apparatus, the apparatus has been exposed to rain or moisture, does not operate normally, or has been dropped.



The lightning flash with arrowhead symbol, within an equilateral triangle, is intended to alert the user to the presence of uninsulated "dangerous voltage" within the product's enclosure that may be of sufficient magnitude to constitute a risk of electric shock to persons.



The exclamation point within an equilateral triangle is intended to alert the user to the presence of important operating and maintenance (servicing) instructions in the literature accompanying the appliance.

WARNING: To reduce the risk of fire or electric shock, do not expose this apparatus to rain or moisture.

CAUTION: Use of controls or adjustments or performance of procedures other than those specified may result in hazardous radiation exposure.



INTRODUCTION

Congratulations on your purchase of a Phonic MX DJ mixer – MX300 USB. In order to get the best performance of the MX300 USB, please read this user's manual – including all safety instructions – carefully before operation. After reading, keep it in a safe place for future reference.

FEATURES

- Channels 1 to 3 on the front panel switchable between phono, mic or line
- Incorporate MP3 and WAV files into the mix via onboard USB playback function
- Mic 1 microphone-input via unbalanced XLR-socket on the front panel
- Mic 2 and 3 microphone-input via unbalanced 1/4" jacks on the back panel
- Separate tone controls (bass, middle, treble) on each channel
- Crossfader for mixing channels 1, 2 and 3 through crossfader assign button
- 2 beat-indicators by the crossfader for perfect mixing
- 3 LED level meter display (master out and cue level)
- Headphones-connection on the front panel with adjustable level
- Additional cue-split/cue-mix button
- Mix headphone signal through cue-mixing fader
- Output signal adjustable via master-control and balance-control
- Master, booth and record outputs via stereo RCA jacks
- Record output independent from master-level
- Separate controllable monitor output for connecting active speakers or additional amplifiers

GETTING STARTED

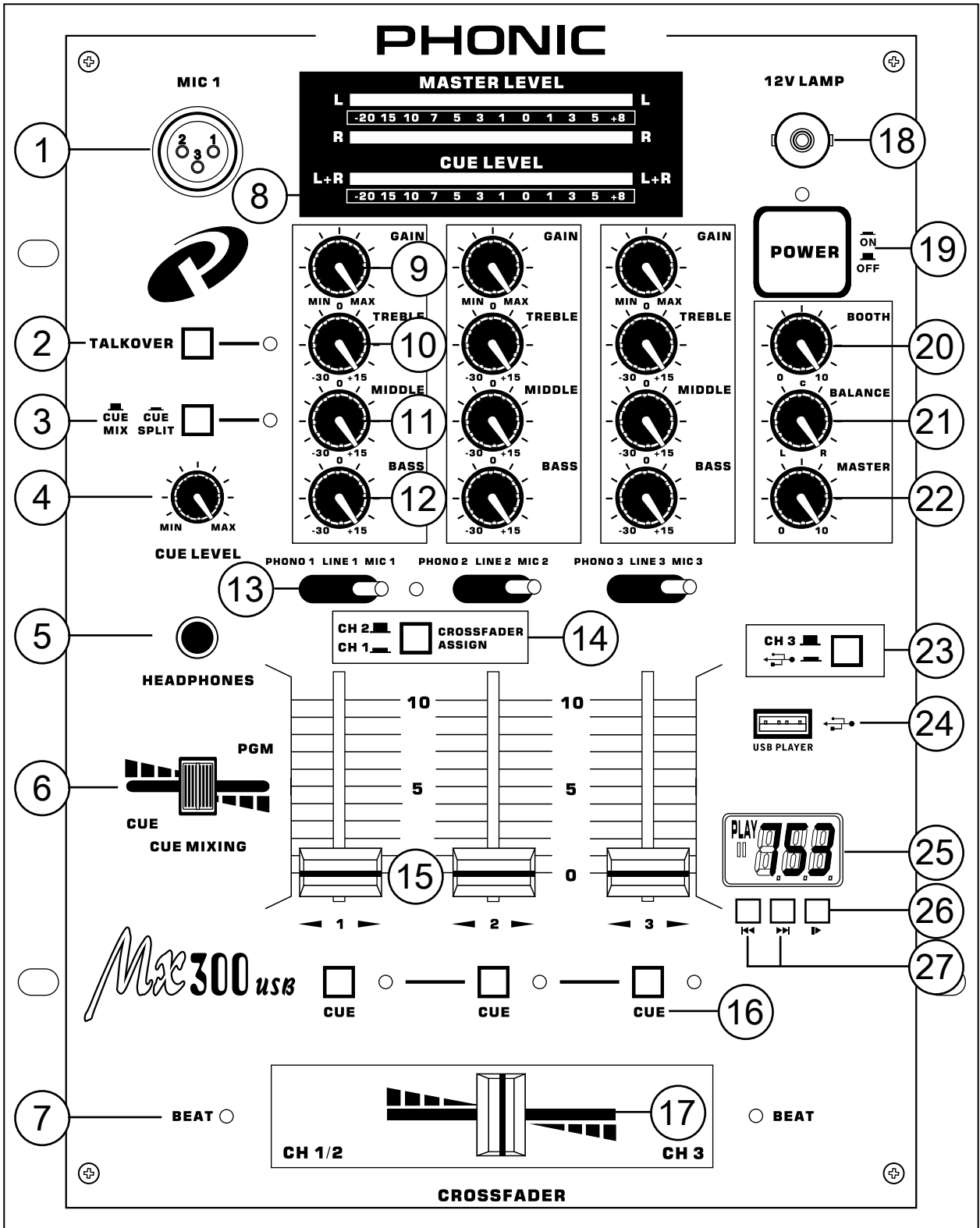
1. Before turning the power on, set the Master output control on each channel all the way down.
2. Always turn the power off before connecting or disconnecting cables.
3. Check the AC Voltage before connecting the AC plug.

USB PLAYER

1. Connect a USB flash drive to the USB port on the front panel of the MX300 USB.
2. Wait a couple of seconds while the USB player initializes the USB drive.
3. Push the Play / Pause button to start playback
4. Playback will start from the first track, where files are ordered in 'numerbetical' order.

Please note that the maximum possible bit rate for playback of tracks is 320 kbps.

English
 Deutsch
 Español
 Français
 Português
 日本語
 简体中文



BACK PANEL

1. Mic 1 Socket

Connect the microphone with this XLR plug and control the signal via the Mic Level-control. You can adjust the microphone volume by using the ch-1 fader. Make sure that the PHONO/LINE/MIC switch is set to MIC.

2. Talkover Button

Press this button if you want to use your microphone. When the button is pressed, all other signal sources will be attenuated by 14 dB, so that the microphone can be clearly heard. In the OFF position, all signals returns to their original level.

3. Cue Split/Cue Mix Button

When this button is pushed in, the cue signal is on one side of the headphones and the output signal on the other. When this button is released, the mix of both the cue signal and output signal is apparent on both sides of the headphones.

4. Cue Level Control

With this knob, you can adjust the headphones volume without changing the output signal.

5. Headphone Socket

Connect your headphone with impedance between 8 and 600 Ohms to this connector.

6. Cue Mixing Fader

Connect your headphones to the headphones socket and select the desired channel for monitoring with the Cue button. When you set the cue mixing fader to PGM (cue button non-functional) you can cue the output signal of the mixer. When this fader is set dead-center you can cue both the channel signal you selected and the output signal.

7. Beat Indicator

The LED lights up at every bass beat of the respective source. As soon as the LEDs flash synchronously, the speed of the two sources is synchronized.

8. Master Level / Cue Level Display

The upper display shows the level of the left and right master output, while the lower display shows the level of the channel currently being cued (cue LED on).

9. Gain Control

Use this knob to set the level of input channel.

10. Treble Control

This control is used to increase or lower the high frequency (10 kHz) audio of the input channel.

11. Middle Control

This control is used to increase or lower the middle frequency (1 kHz) audio of the input channel.

12. Bass Control

This control is used to increase or lower the low frequency (40 Hz) audio of the input channel.

13. Phono / Line / Mic Switch

Use this switch to select the input to be sent to the individual channel.

14. Crossfader Assign Selector

With this knob, you can choose whether channel 1 (button pressed) or channel 2 (button released) will be assigned to the left crossfader-side. The other channel remains active.

15. Channel Fader

These faders are used to adjust the level of each channel.

16. Cue Button

Use these buttons to select the corresponding channels to be monitored. The red LED next to the button will light up when the channel is selected.

17. Crossfader

This fader allows mixing of the signals two channels at a user-adjustable ratio. If the crossfader is in the center position, both channels can be heard; when set to either side, the signal corresponding to that side will be more prevalent. When this control is set all the way to the left or right, the corresponding input will be the only signal heard.

18. 12V Lamp

This BNC-socket for gooseneck lamps has a maximum current of 120 mA.

19. Power Switch

Press this button to turn on the MX300 USB. The LED will illuminate when the power is on.

20. Booth Control

You can connect your monitor system with this booth socket on the back panel.

21. Balance Control

Used to adjust how much of the signal is sent to the left and right master socket.

22. Master Control

Adjust the level of the master output using this control.

23. Channel 3 / USB Button

This button determines the signal used for channel 3 of the MX300 USB. Users can either select the channel 3 input sources or the USB playback function.

24. USB Connector

This USB jack is for connection of USB flash drives. The MX300 USB can play MP3 and WMA files directly from the connected flash drive. Phonic recommends that users format their USB flash drives using a FAT-32 file system.

25. USB Player Display

This will display the track number of the currently selected/playing track. To the left of the display users can see the play/pause status of the USB player.

26. Play / Pause Button

This button will allow users to play and pause files from the inserted USB flash drive.

27. Back / Skip Buttons

These buttons are used to skip back and forth between tracks. Pushing and holding one of these buttons will allow you to skip forwards and backwards within the track.

BACK PANEL

28. AC Connection

This connector is used to plug in the power cord. Please use the power cord provided along with the mixer only.

29. Fuse Holder

Only remove and/or replace the fuse when the device is disconnected from the main power source. Only use fuses of the same rating and power.

30. Master Output

Connect these RCA outputs to the main amplifier or active speakers as necessary. This mix is taken directly after the DJ's final mix from the crossfader section.

31. Booth Output

Connect your monitor system here.

32. Record Output

Connect these RCA outputs to a recorder or other input device. These jacks are RCA types, which are suitable for connection of most analog recording devices. The level of these outputs is not influenced by the master control.

33. Phono / Line Inputs Sockets

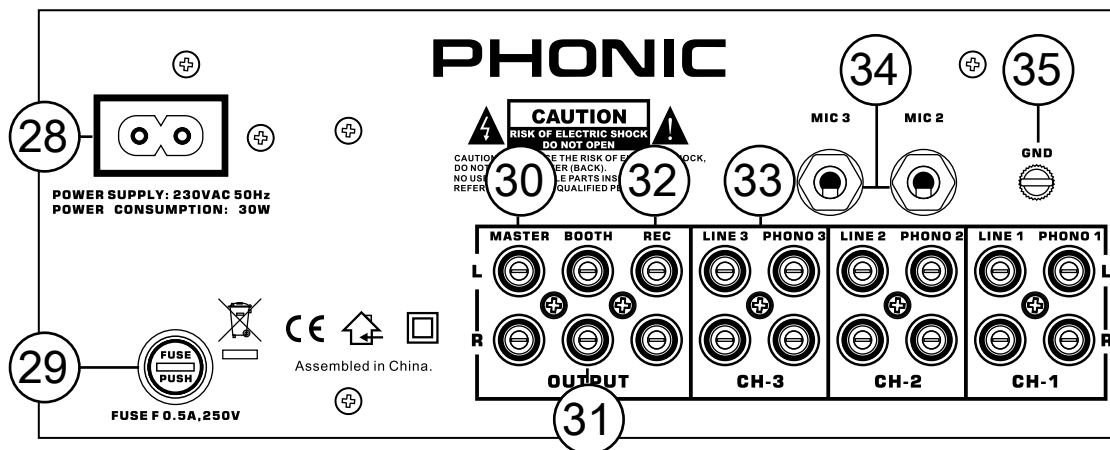
These inputs, for channels 1 to 3, accept RCA-plug connectors. Use phono input socket for phonograph turntables. Use line socket for CD players, cassette players. Line level musical instruments with stereo outputs such as rhythm machines or samplers should also be connected with the line input socket.

34. Microphone Inputs

Connect a microphone with 1/4" phone jack connectors here. The signals of these inputs can be routed through the corresponding channels and controlled via the respective level controls. This is dependent on the phono/line/mic switch being set to mic.

35. Ground (GND)

Connect the earth cable from turntables here. This helps to reduce humming and pop noise.



REPLACING THE CROSSFADER

1. Remove the fader knob from the crossfader itself.
2. Unscrew and remove the two outer screws on the fader panel.
3. Remove the fader and unplug the cable connected to it.
4. Replace with the new fader and fix it to the device with the screws.
5. Connect the new fader and fix it to the mixer.

English

Deutsch

Español

Français

Português

日本語

简体中文

SPECIFICATIONS

Input	3 phono, 3 line, 3 mic
Output	1 master, 1 rec, 1 booth via RCA
Minimum Input Voltage	
Phono	3.2mV RMS, 47k ohms
Line	150mV RMS, 47k ohms
Microphone	3mV RMS 2.2k ohms
Output Voltage	
Line	7V RMS max.
Headphone	0.4V
Frequency Range	+/-3 dB
Phono	20 Hz - 2 kHz
Line	10 Hz - 50 kHz
Microphone	20 Hz - 20 kHz
Distortion	<0.05%
S/N Ratio	
Phono	-50 dB
Line	-64 dB
Microphone	-60 dB
Talkover Attenuation	-14 dB
Headphones Impedance	8 ohms
USB Player	
Maximum Playback Bitrate	320 kbit/second
Supported Playback Formats	MP3, WAV
Tone Control	
Treble	10kHz, -30dB - 15dB
Middle	1 kHz, -30dB - 15dB
Bass	40 Hz, -30dB - 15 dB
Power Supply	
Power Consumption	30W
Dimensions (WxDxH)	254 x 320 x 99 mm (10" x 12.6" x 3.9")
Weight	3.5 kg (7.7 lbs)

English

Deutsch

Español

Français

Português

日本語

简体中文

SERVICE AND REPAIR

For replacement parts, service and repairs please contact the Phonic distributor in your country. Phonic does not release service manuals to consumers, and advice users to not attempt any self repairs, as doing so voids all warranties. You can locate a dealer near you at <http://www.phonic.com/where/>.

WARRANTY INFORMATION

Phonic stands behind every product we make with a no-hassles warranty. Warranty coverage may be extended, depending on your region. Phonic Corporation warrants this product for a minimum of one year from the original date of purchase against defects in material and workmanship under use as instructed by the user's manual. Phonic, at its option, shall repair or replace the defective unit covered by this warranty. Please retain the dated sales receipt as evidence of the date of purchase. You will need it for any warranty service. No returns or repairs will be accepted without a proper RMA number (return merchandise authorization). In order to keep this warranty in effect, the product must have been handled and used as prescribed in the instructions accompanying this warranty. Any tampering of the product or attempts of self repair voids all warranty. This warranty does not cover any damage due to accident, misuse, abuse, or negligence. This warranty is valid only if the product was purchased new from an authorized Phonic dealer/distributor. For complete warranty policy information, please visit <http://www.phonic.com/warranty/>.

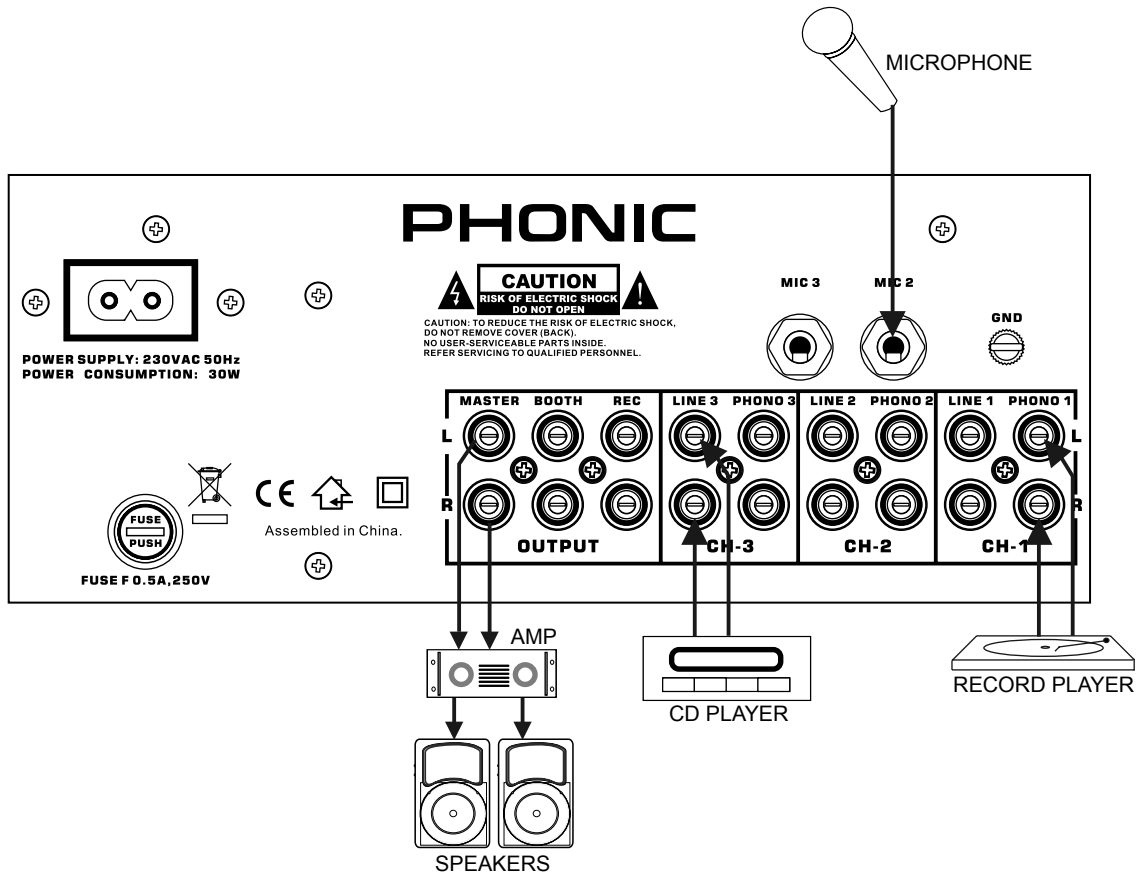
CUSTOMER SERVICE AND TECHNICAL SUPPORT

We encourage you to visit our online help at <http://www.phonic.com/support/>. There you can find answers to frequently asked questions, tech tips, driver downloads, returns instruction and other helpful information. We make every effort to answer your questions within one business day.

support@phonic.com
<http://www.phonic.com>

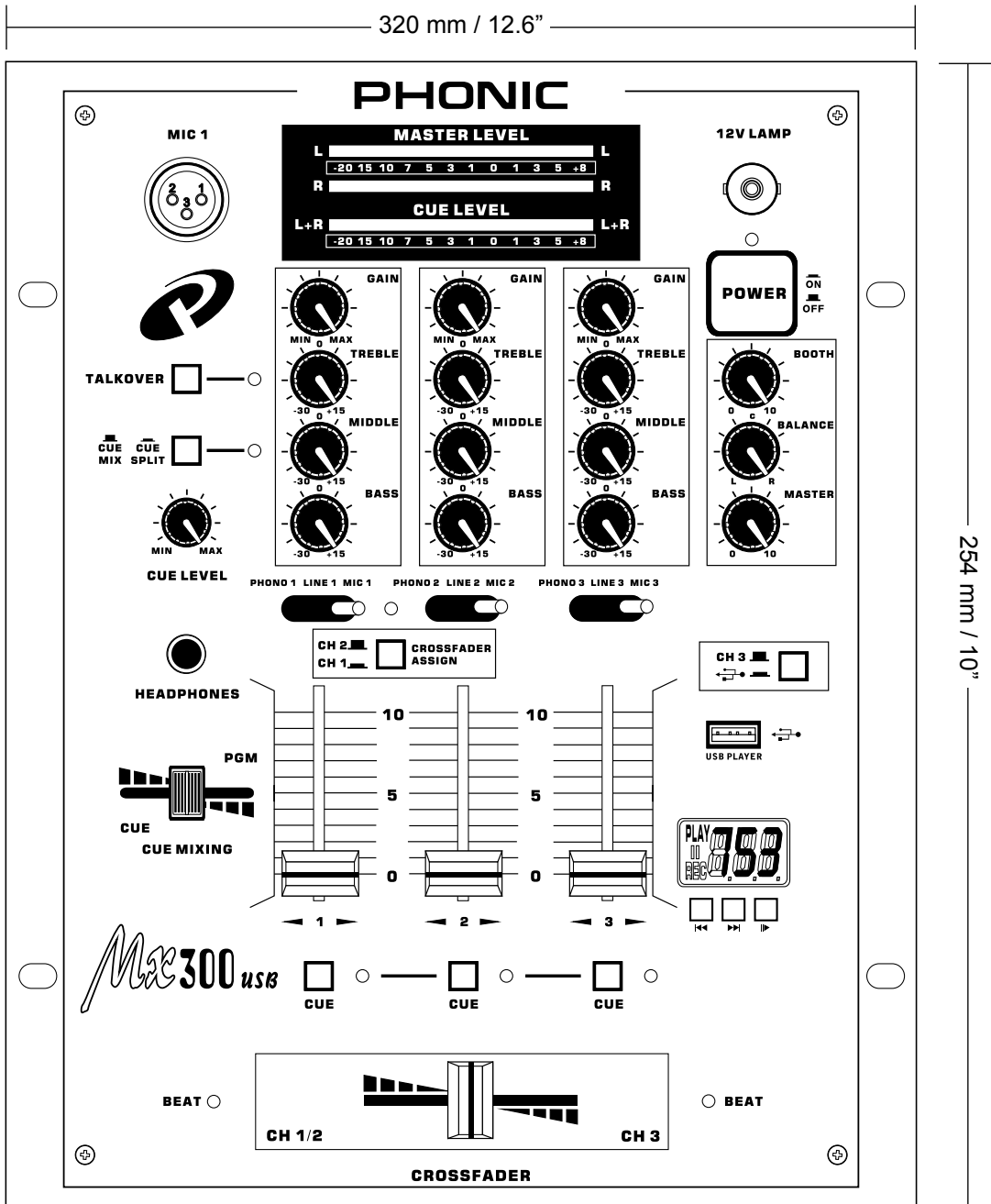
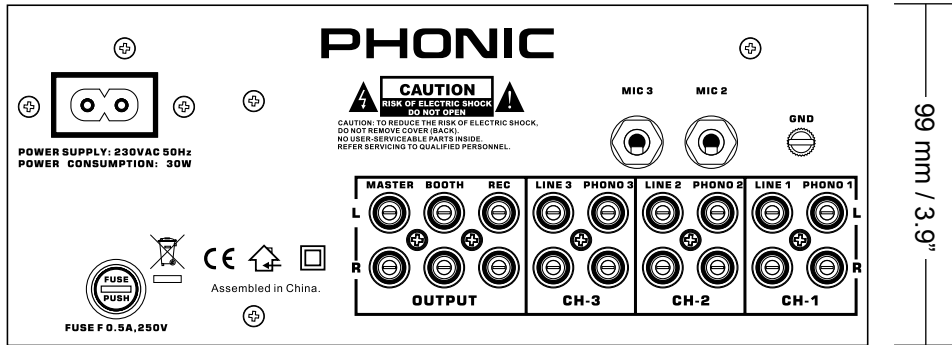
PHONIC

APPLICATION



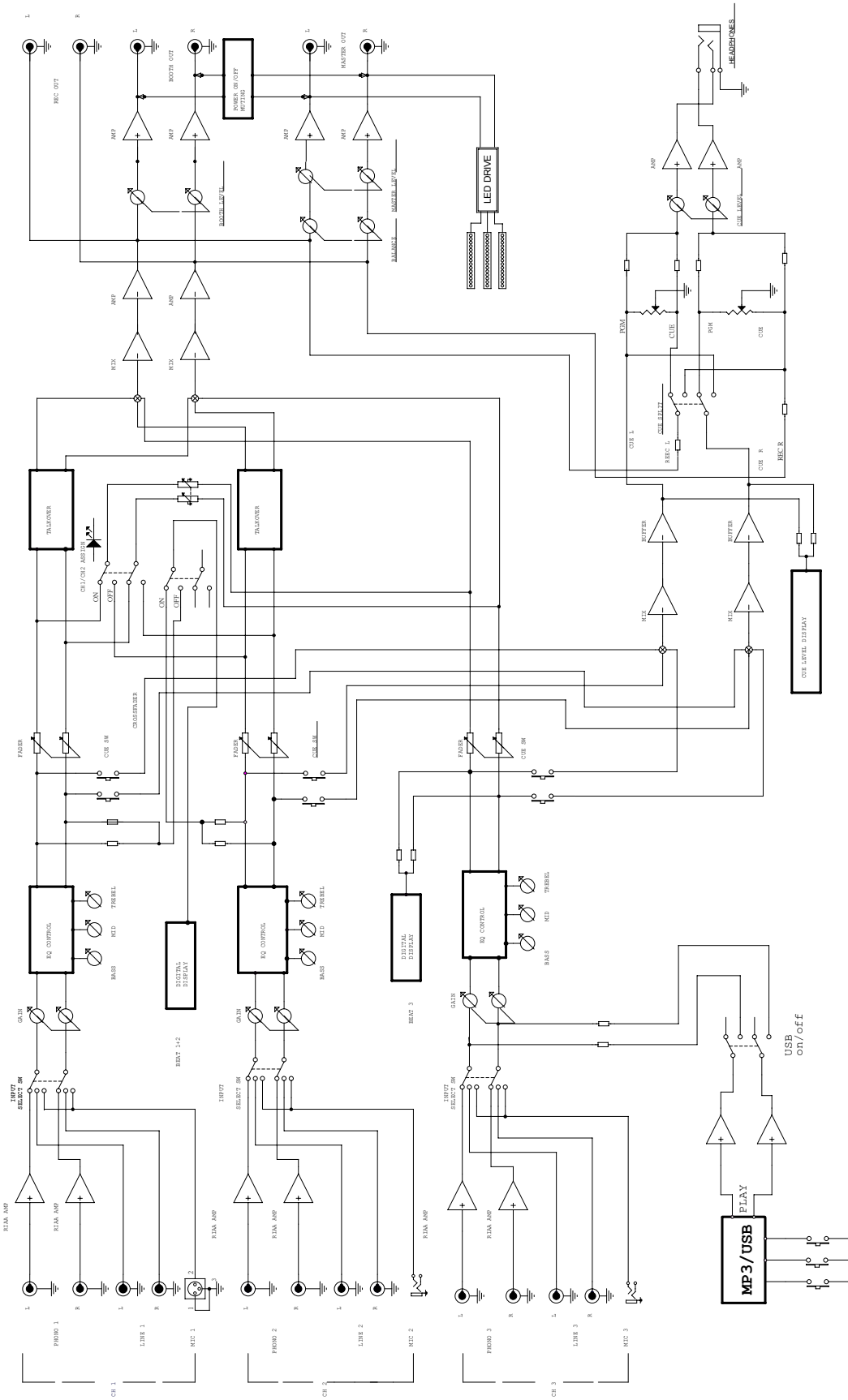
DIMENSIONS

Appendix
Anhang
Apêndice
Annexe
Apêndice
附錄
附录



BLOCK DIAGRAM

MX300USB BLOCK DIAGRAM



Doc No.	001
Doc Name	MX300 USB
Doc Date	2011.03.10
Doc Ver	1.0
Doc Rev	0

PHONIC
WWW.PHONIC.COM