



PHONIC | GWA SERIES

Constant Curvature Line Array System

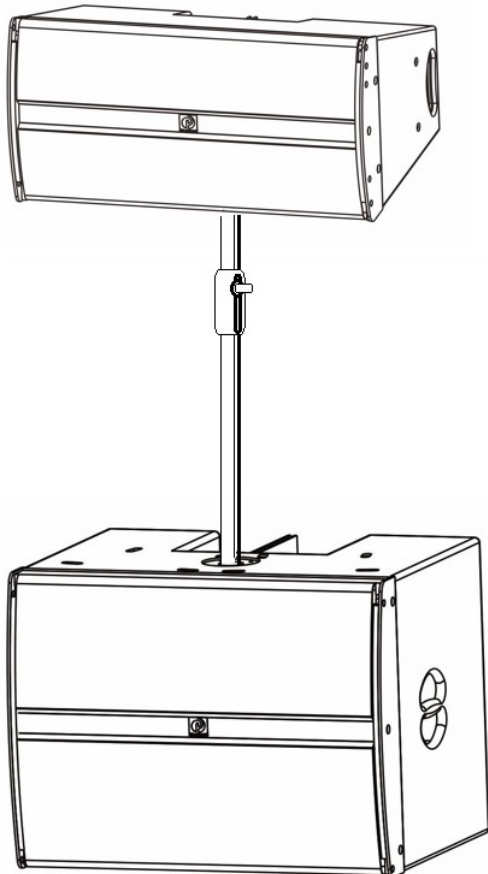


GWA 12 1000W, LF12"/HF3" curve array passive speaker

GWA 18B 2400W, LF18" passive Subwoofer



Phonic introduces Constant Curvature Line Array System – GWA series, developed to meet the increasingly diverse needs of performance rental companies and system integrators, which provides the best audience coverage.



GWA series consisting of 12" constant curvature array full range speaker and 18" flying subwoofers. Excellent sound quality and flexible vertical/horizontal dispersion technology enable GWA series to adapt to the needs of any project.

Applications:

- Outdoor performances
- Large stadiums/arenas
- Conference Center
- Theatre 、 Auditorium
- Hotels 、 banquet halls
- Bar 、 Live House

GWA 12 constant curvature line array is made of birch plywood, which consists of a 12-inch bass unit and a 3-inch compression driver. With BEM simulation technology optimized wave correction through waveguide horn. It provides 90-degree horizontal (asymmetrical) and 30-degree vertical coverage for precise and centralized vertical control over the entire speaker frequency response range. GWA 12 can form an array horizontally or vertically. The smallest array group of two speakers could get excellent vertical coverage. The enclosure integrated flying hardware allows up to sixteen GWA 12 full-band line array. Variable angles from 1.5 to 22.5 degrees (at 3-degree steps). Ensuring simple system configuration and setup, which results in a perfectly balanced line array combination. Multiple speaker frequency responses from 50Hz to 20kHz perfectly.

Most of all, the GWA system also features an integrated quick mounting halt for the creation of horizontal arrays using dedicated hangers. Each hanger can support two horizontally mounted GWA 12. The integration company can connect multiple fly-bar hangers simultaneously to create horizontal arrays that provide 180-degree half-ring coverage. At the same time, in order to extend the low frequency response of system. The **GWA 18B** subwoofer is ideal for small and medium-sized projects, which combines with the GWA 12 in size and integrated hangers seamlessly. Built-in 18-inch long stroke neodymium magnet LF driver unit that can work for long periods of time to produce a very high level of sound pressure. The addition of GWA 18B extends the frequency response range of the entire system to 35Hz.



GWA 12



Specifications

Driver Unit: Low Frequency : 1 x 12"

High Frequency : 1 x 3" compression driver

Frequency Response : 50 Hz - 20 kHz (-10dB)

Frequency Response : 55 Hz - 18 kHz (± 3 dB)

Sensitivity : 103 dB (1W @ 1m)

Power Handling: 1000 watts (Program), 2000 watts (Peak)

Maximum SPL : 136 dB

Nominal Coverage Angle (-6 dB) : Horizontal 90°, Vertical 30°

Nominal Impedance : 8 Ω

Finish : Wear-resistant textured black paint

Enclosure : Multi-layer birch plywood

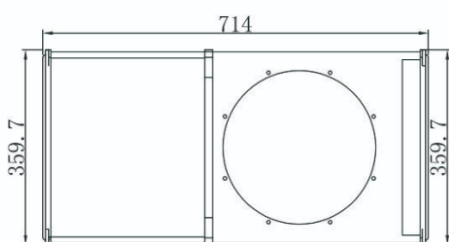
Suspension Hardware : 12*M8 rigging points

Input Connectors : Speakon NL4 x 2

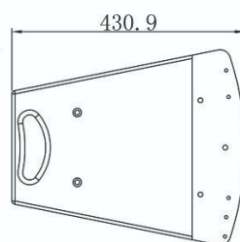
Rigging : GWA Rigging system

Dimensions : (H x W x D) 360 mm x 714 mm x 431 mm

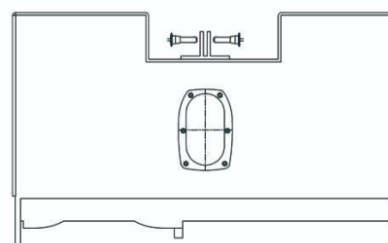
Net Weight : 23 kg



Front



Side



Top

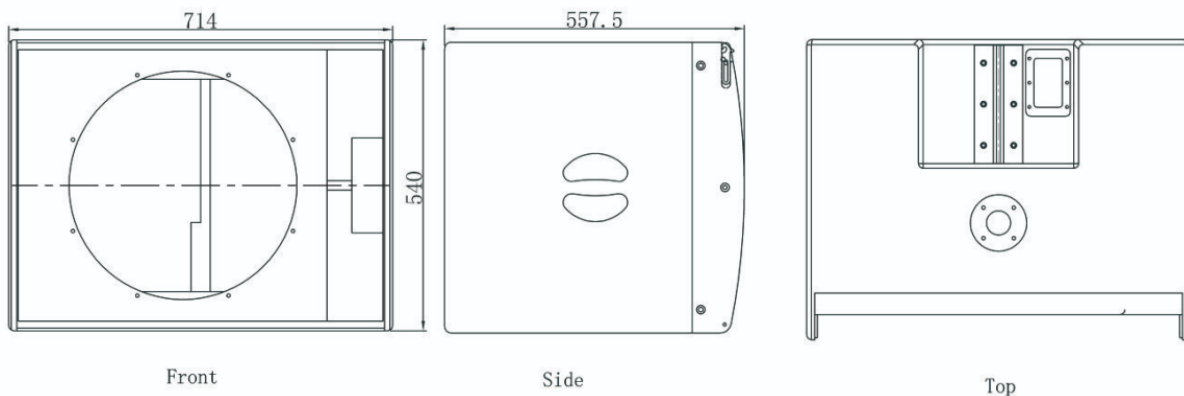


GWA 18B

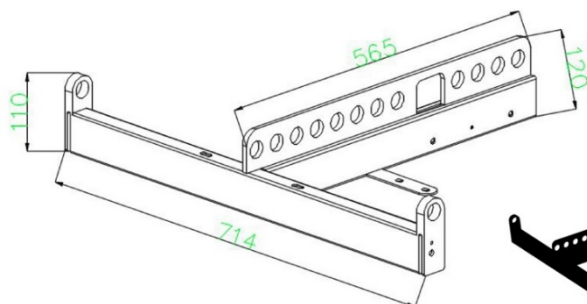


Specifications

- Driver Unit: 1 x 18" neodymium magnet LF
- Frequency Response : 35 Hz - 300 Hz (-10dB)
- Frequency Response : 45 Hz - 250 Hz (± 3 dB)
- Sensitivity : 101 dB (1W @ 1m)
- Power Handling : 2400 watts (Program), 4800 watts (Peak)
- Maximum SPL : 137 dB
- Nominal Coverage Angle: 360°
- Nominal Impedance : 8 Ω
- Finish : Wear-resistant textured black paint
- Enclosure : Multi-layer birch plywood
- Input Connectors : Speakon NL4 x 2
- Rigging : GWA Rigging system
- Dimensions : (H x W x D) 540 mm x 714 mm x 558 mm
- Net Weight : 43 kg



GWAF: GWA series accessory



GWAF - Frame for GWA series only

